

Datasheet for ABIN6243874

**anti-Ceramide Synthase 2 antibody (AA 137-168)**[Go to Product page](#)**1** Image

## Overview

Quantity:	200 µL
Target:	Ceramide Synthase 2 (CERS2)
Binding Specificity:	AA 137-168
Reactivity:	Human
Host:	Rabbit
Clonality:	Polyclonal
Conjugate:	This Ceramide Synthase 2 antibody is un-conjugated
Application:	Western Blotting (WB)

## Product Details

Immunogen:	This CERS2 antibody is generated from a rabbit immunized with a KLH conjugated synthetic peptide between 137-168 amino acids from the Central region of human CERS2.
Clone:	RB55088
Isotype:	Ig Fraction
Purification:	This antibody is purified through a protein A column, followed by peptide affinity purification.

## Target Details

Target:	Ceramide Synthase 2 (CERS2)
Alternative Name:	CERS2 ( <a href="#">CERS2 Products</a> )
Background:	Suppresses the growth of cancer cells. May be involved in sphingolipid synthesis.

## Target Details

Molecular Weight:	44876
UniProt:	<a href="#">Q96G23</a>

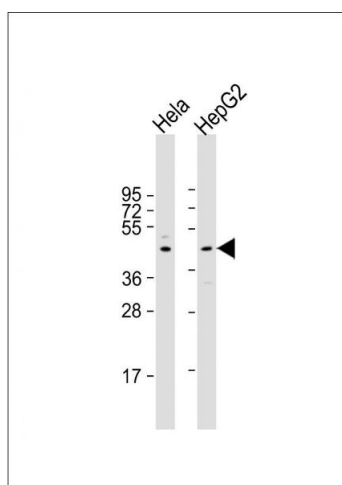
## Application Details

Application Notes:	WB: 1:2000
Restrictions:	For Research Use only

## Handling

Format:	Liquid
Buffer:	Purified polyclonal antibody supplied in PBS with 0.09 % (W/V) sodium azide.
Preservative:	Sodium azide
Precaution of Use:	This product contains Sodium azide: a POISONOUS AND HAZARDOUS SUBSTANCE which should be handled by trained staff only.
Storage:	4 °C, -20 °C
Expiry Date:	6 months

## Images



### Western Blotting

**Image 1.** All lanes : Anti-CERS2 Antibody (Center) at 1:2000 dilution Lane 1: Hela whole cell lysate Lane 2: HepG2 whole cell lysate Lysates/proteins at 20 µg per lane. Secondary Goat Anti-Rabbit IgG, (H+L), Peroxidase conjugated at 1/10000 dilution. Predicted band size : 45 kDa Blocking/Dilution buffer: 5 % NFDm/TBST.