



[Go to Product page](#)

Datasheet for ABIN6243882
anti-MEF2C antibody (AA 374-403)

2 Images

Overview

Quantity:	400 µL
Target:	MEF2C
Binding Specificity:	AA 374-403
Reactivity:	Human
Host:	Rabbit
Clonality:	Polyclonal
Conjugate:	This MEF2C antibody is un-conjugated
Application:	Western Blotting (WB)

Product Details

Immunogen:	This MEF2C antibody is generated from rabbits immunized with a KLH conjugated synthetic peptide between 374-403 amino acids from human MEF2C.
Clone:	RB11048
Isotype:	Ig Fraction
Predicted Reactivity:	Pig, Rat
Purification:	This antibody is purified through a protein A column, followed by peptide affinity purification.

Target Details

Target:	MEF2C
Alternative Name:	MEF2C (MEF2C Products)

Target Details

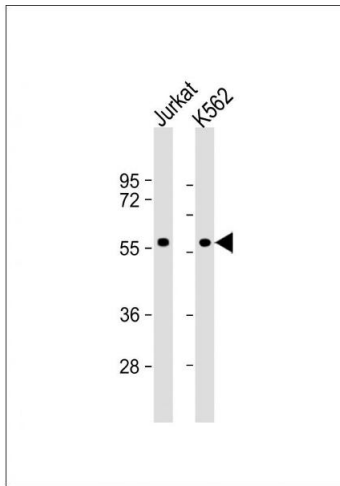
Background:	MEF2C is a transcription activator which binds specifically to the MEF2 element present in the regulatory regions of many muscle-specific genes. This protein controls cardiac morphogenesis and myogenesis, and is also involved in vascular development. It may also be involved in neurogenesis and in the development of cortical architecture.
Molecular Weight:	51221
NCBI Accession:	NP_001124477 , NP_001180276 , NP_001180277 , NP_001180278 , NP_001180279 , NP_002388
UniProt:	Q06413
Pathways:	Neurotrophin Signaling Pathway , Activation of Innate immune Response , Cellular Response to Molecule of Bacterial Origin , Carbohydrate Homeostasis , Chromatin Binding , Regulation of Muscle Cell Differentiation , Skeletal Muscle Fiber Development , Toll-Like Receptors Cascades , BCR Signaling

Application Details

Application Notes:	WB: 1:1000. WB: 1:1000
Restrictions:	For Research Use only

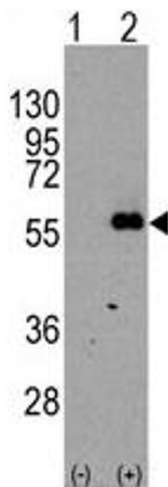
Handling

Format:	Liquid
Buffer:	Purified polyclonal antibody supplied in PBS with 0.09 % (W/V) sodium azide.
Preservative:	Sodium azide
Precaution of Use:	This product contains Sodium azide: a POISONOUS AND HAZARDOUS SUBSTANCE which should be handled by trained staff only.
Storage:	4 °C,-20 °C
Expiry Date:	6 months



Western Blotting

Image 1. All lanes : Anti-MEF2C Antibody at 1:1000 dilution
 Lane 1: Jurkat whole cell lysate Lane 2: K562 whole cell lysate
 Lysates/proteins at 20 µg per lane. Secondary Goat Anti-Rabbit IgG, (H+L), Peroxidase conjugated at 1/10000 dilution. Predicted band size : 51 kDa
 Blocking/Dilution buffer: 5 % NFDM/TBST.



Western Blotting

Image 2. Western blot analysis of MEF2C (arrow) using rabbit polyclonal MEF2C Antibody (R). 293 cell lysates (2 µg/lane) either nontransfected (Lane 1) or transiently transfected with the MEF2C gene (Lane 2) (Origene Technologies).