

Datasheet for ABIN6243884  
**anti-MIXL1 antibody (C-Term)**[Go to Product page](#)

## 1 Image

## Overview

Quantity:	400 µL
Target:	MIXL1
Binding Specificity:	AA 183-218, C-Term
Reactivity:	Mouse, Human
Host:	Rabbit
Clonality:	Polyclonal
Conjugate:	This MIXL1 antibody is un-conjugated
Application:	Western Blotting (WB)

## Product Details

Immunogen:	This MIXL1 antibody is generated from a rabbit immunized with a KLH conjugated synthetic peptide between 183-218 amino acids from the C-terminal region of human MIXL1.
Clone:	RB51401
Isotype:	Ig Fraction

## Target Details

Target:	MIXL1
Alternative Name:	MIXL1 ( <a href="#">MIXL1 Products</a> )
Background:	Transcription factor that play a central role in proper axial mesendoderm morphogenesis and endoderm formation. Required for efficient differentiation of cells from the primitive streak stage to blood, by acting early in the recruitment and/or expansion of mesodermal progenitors

Target Details

to the hemangioblastic and hematopoietic lineages. Also involved in the morphogenesis of the heart and the gut during embryogenesis. Acts as a negative regulator of brachyury [removed]By similarity).

Molecular Weight: 24659

UniProt: [Q9H2W2](#)

Application Details

Application Notes: WB: 1:500-1:1000

Restrictions: For Research Use only

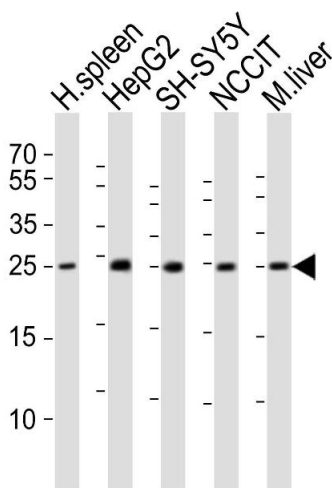
Handling

Format: Liquid

Storage: 4 °C,-20 °C

Expiry Date: 6 months

Images



Western Blotting

**Image 1.** Western blot analysis of lysates from human spleen tissue lysate, HepG2, SH-SY5Y, NCCIT cell line, mouse liver tissue lysate (from left to right), using MIXL1 Antibody (C-term) (ABIN6243884 and ABIN6577779). (ABIN6243884 and ABIN6577779) was diluted at 1:1000 at each lane. A goat anti-rabbit IgG H&L(HRP) at 1:10000 dilution was used as the secondary antibody. Lysates at 20 µg per lane.