

Datasheet for ABIN6243889
anti-MTHFD2 antibody (C-Term)[Go to Product page](#)

1 Image

Overview

Quantity:	200 µL
Target:	MTHFD2
Binding Specificity:	AA 266-299, C-Term
Reactivity:	Human, Mouse
Host:	Mouse
Clonality:	Monoclonal
Conjugate:	This MTHFD2 antibody is un-conjugated
Application:	Western Blotting (WB)

Product Details

Immunogen:	This MTHFD2 antibody is generated from a mouse immunized with a KLH conjugated synthetic peptide between 266-299 amino acids from the C-terminal region of human MTHFD2.
Clone:	1985CT220-118-31
Isotype:	IgG1 kappa
Predicted Reactivity:	H, M
Purification:	This antibody is purified through a protein G column, followed by dialysis against PBS.

Target Details

Target:	MTHFD2
Alternative Name:	MTHFD2 (MTHFD2 Products)

Target Details

Molecular Weight: 37895

UniProt: [P13995](#)

Application Details

Application Notes: WB: 1:4000

Restrictions: For Research Use only

Handling

Format: Liquid

Buffer: Purified monoclonal antibody supplied in PBS with 0.09 % (W/V) sodium azide.

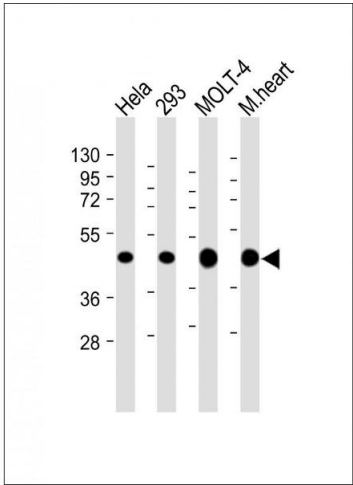
Preservative: Sodium azide

Precaution of Use: This product contains Sodium azide: a POISONOUS AND HAZARDOUS SUBSTANCE which should be handled by trained staff only.

Storage: 4 °C, -20 °C

Expiry Date: 6 months

Images



Western Blotting

Image 1. All lanes : Anti-MTHFD2 Antibody (C-term) at 1:4000 dilution Lane 1: HeLa whole cell lysate Lane 2: 293 whole cell lysate Lane 3: MOLT-4 whole cell lysate Lane 4: Mouse heart lysate Lysates/proteins at 20 µg per lane. Secondary Goat Anti-mouse IgG, (H+L), Peroxidase conjugated at 1/10000 dilution. Predicted band size : 38 kDa Blocking/Dilution buffer: 5 % NFDM/TBST.