

Datasheet for ABIN6243894  
**anti-MYL1 antibody (AA 101-135)**[Go to Product page](#)

## 4 Images

## Overview

Quantity:	200 µL
Target:	MYL1
Binding Specificity:	AA 101-135
Reactivity:	Human, Mouse
Host:	Rabbit
Clonality:	Polyclonal
Conjugate:	This MYL1 antibody is un-conjugated
Application:	Western Blotting (WB), Immunohistochemistry (Paraffin-embedded Sections) (IHC (p)), Immunofluorescence (IF), Flow Cytometry (FACS)

## Product Details

Immunogen:	This MYL1 antibody is generated from a rabbit immunized with a KLH conjugated synthetic peptide between 101-135 amino acids from the Central region of human MYL1.
Clone:	RB57782
Isotype:	Ig Fraction
Purification:	This antibody is purified through a protein A column, followed by peptide affinity purification.

## Target Details

Target:	MYL1
Alternative Name:	MYL1 ( <a href="#">MYL1 Products</a> )

## Target Details

Background:	Regulatory light chain of myosin. Does not bind calcium.
Molecular Weight:	21145
UniProt:	<a href="#">P05976</a>

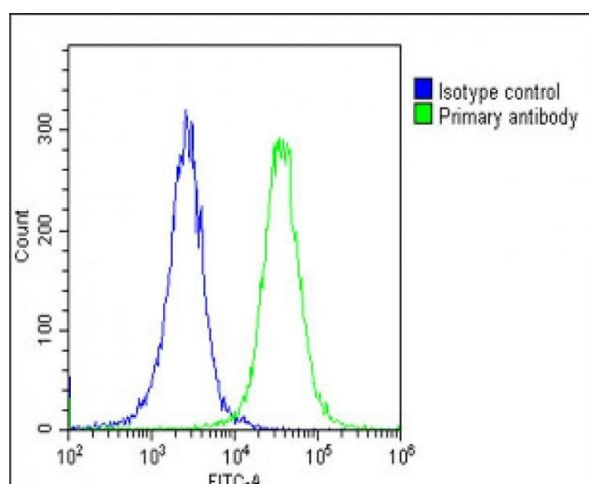
## Application Details

Application Notes:	IF: 1:25. WB: 1:2000. IHC-P: 1:25. FC: 1:25
Restrictions:	For Research Use only

## Handling

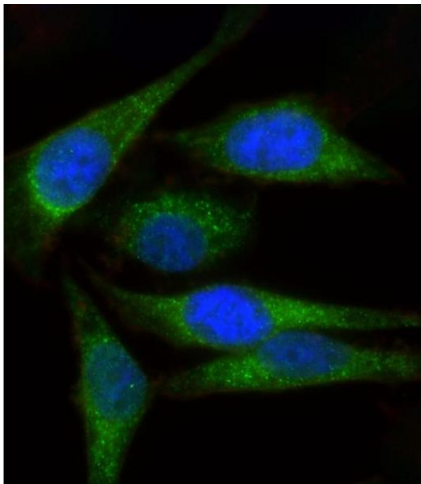
Format:	Liquid
Buffer:	Purified polyclonal antibody supplied in PBS with 0.09 % (W/V) sodium azide.
Preservative:	Sodium azide
Precaution of Use:	This product contains Sodium azide: a POISONOUS AND HAZARDOUS SUBSTANCE which should be handled by trained staff only.
Storage:	4 °C,-20 °C
Expiry Date:	6 months

## Images



### Flow Cytometry

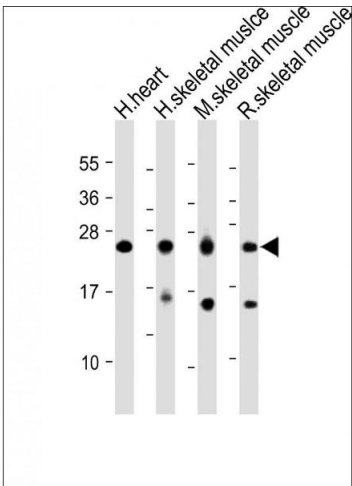
**Image 1.** Overlay histogram showing HeLa cells stained with (ABIN6243894 and ABIN6578868)(green line). The cells were fixed with 2 % paraformaldehyde (10 min) and then permeabilized with 90 % methanol for 10 min. The cells were then incubated in 2 % bovine serum albumin to block non-specific protein-protein interactions followed by the antibody ((ABIN6243894 and ABIN6578868), 1:25 dilution) for 60 min at 37 °C. The secondary antibody used was Goat-Anti-Rabbit IgG, DyLight® 488 Conjugated Highly Cross-Adsorbed(OE188374) at 1/200 dilution for 40 min at 37 °C. Isotype control antibody (blue line) was rabbit IgG1 (1 µg/1x10<sup>6</sup> cells) used under the same conditions. Acquisition



of >10,000 events was performed.

Immunofluorescence

**Image 2.** Immunofluorescent analysis of 4 % paraformaldehyde-fixed, 0.1 % Triton X-100 permeabilized HeLa cells labeling MYL1 with (ABIN6243894 and ABIN6578868) at 1/25 dilution, followed by Dylight® 488-conjugated goat anti-Rabbit IgG secondary antibody at 1/200 dilution (green). Immunofluorescence image showing Cytoplasm and Weak Nucleus staining on HeLa cell line. The nuclear counter stain is DAPI (blue).



Western Blotting

**Image 3.** All lanes : Anti-MYL1 Antibody (Center) at 1:2000 dilution Lane 1: Human heart lysate Lane 2: Human skeletal muscle lysate Lane 3: Mouse skeletal muscle lysate Lane 4: Rat skeletal muscle lysate Lysates/proteins at 20 µg per lane. Secondary Goat Anti-Rabbit IgG, (H+L), Peroxidase conjugated at 1/10000 dilution. Predicted band size : 21 kDa Blocking/Dilution buffer: 5 % NFDN/TBST.

Please check the [product details page](#) for more images. Overall 4 images are available for ABIN6243894.