

Datasheet for ABIN6243896

anti-MMP23A antibody (AA 328-362)[Go to Product page](#)**1** Image

Overview

Quantity:	400 µL
Target:	MMP23A
Binding Specificity:	AA 328-362
Reactivity:	Human
Host:	Rabbit
Clonality:	Polyclonal
Conjugate:	This MMP23A antibody is un-conjugated
Application:	Western Blotting (WB)

Product Details

Immunogen:	This MMP23A antibody is generated from a rabbit immunized with a KLH conjugated synthetic peptide between 328-362 amino acids from human MMP23A.
Clone:	RB53018
Isotype:	Ig Fraction
Purification:	This antibody is purified through a protein A column, followed by peptide affinity purification.

Target Details

Target:	MMP23A
Alternative Name:	MMP23A (MMP23A Products)
Background:	Protease. May regulate the surface expression of some potassium channels by retaining them

Target Details

in the endoplasmic reticulum (By similarity).

Molecular Weight: 43935

UniProt: [O75900](#)

Application Details

Application Notes: WB: 1:1000

Restrictions: For Research Use only

Handling

Format: Liquid

Buffer: Purified polyclonal antibody supplied in PBS with 0.09 % (W/V) sodium azide.

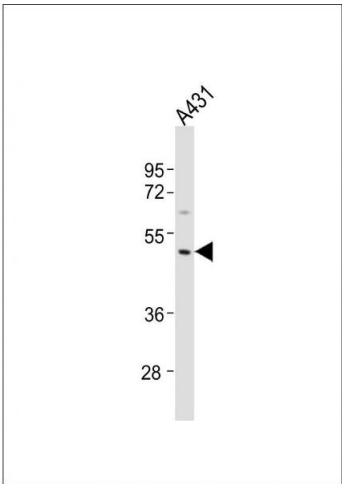
Preservative: Sodium azide

Precaution of Use: This product contains Sodium azide: a POISONOUS AND HAZARDOUS SUBSTANCE which should be handled by trained staff only.

Storage: 4 °C,-20 °C

Expiry Date: 6 months

Images



Western Blotting

Image 1. Anti-P23A Antibody (C-Term) at 1:1000 dilution + A431 whole cell lysates Lysates/proteins at 20 µg per lane. Secondary Goat Anti-Rabbit IgG, (H+L), Peroxidase conjugated at 1/10000 dilution Predicted band size : 44 kDa Blocking/Dilution buffer: 5 % NFDm/TBST.