

Datasheet for ABIN6243899
anti-NAT8L antibody (AA 59-93)[Go to Product page](#)

2 Images

Overview

Quantity:	200 µL
Target:	NAT8L
Binding Specificity:	AA 59-93
Reactivity:	Human
Host:	Rabbit
Clonality:	Polyclonal
Conjugate:	This NAT8L antibody is un-conjugated
Application:	Western Blotting (WB), Immunohistochemistry (Paraffin-embedded Sections) (IHC (p))

Product Details

Immunogen:	This NAT8L antibody is generated from a rabbit immunized with a KLH conjugated synthetic peptide between 59-93 amino acids from human NAT8L.
Clone:	RB55378
Isotype:	Ig Fraction
Predicted Reactivity:	M, Rat
Purification:	This antibody is purified through a protein A column, followed by peptide affinity purification.

Target Details

Target:	NAT8L
Alternative Name:	NAT8L (NAT8L Products)

Target Details

Background: Plays a role in the regulation of lipogenesis by producing N-acetylaspartate acid (NAA), a brain-specific metabolite. NAA occurs in high concentration in brain and its hydrolysis plays a significant part in the maintenance of intact white matter. Promotes dopamine uptake by regulating TNF-alpha expression. Attenuates methamphetamine-induced inhibition of dopamine uptake.

Molecular Weight: 32837

UniProt: [Q8N9F0](#)

Application Details

Application Notes: WB: 1:1000. IHC-P-Leica: 1:250

Restrictions: For Research Use only

Handling

Format: Liquid

Buffer: Purified polyclonal antibody supplied in PBS with 0.09 % (W/V) sodium azide.

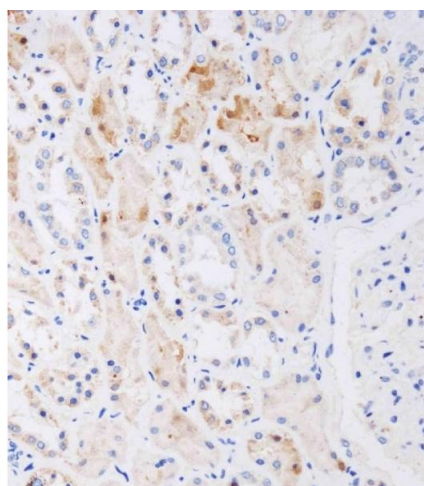
Preservative: Sodium azide

Precaution of Use: This product contains Sodium azide: a POISONOUS AND HAZARDOUS SUBSTANCE which should be handled by trained staff only.

Storage: 4 °C,-20 °C

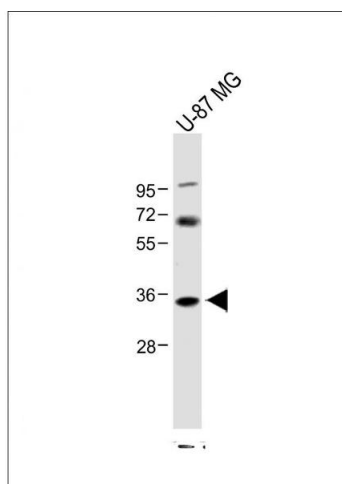
Expiry Date: 6 months

Images



Immunohistochemistry (Paraffin-embedded Sections)

Image 1. Immunohistochemical analysis of A on paraffin-embedded human kidney tissue was performed on the Leica®BOND RXm. Tissue was fixed with formaldehyde at room temperature. Heat induced epitope retrieval was performed by EDTA buffer (pH 9.0). Samples were incubated with primary Antibody (1:250) for 15 min at room temperature. Leica Bond Polymer Refine Detection was used as the secondary antibody.



Western Blotting

Image 2. Anti-NAT8L Antibody (N-Term) at 1:1000 dilution + U-87 MG whole cell lysate Lysates/proteins at 20 µg per lane. Secondary Goat Anti-Rabbit IgG, (H+L), Peroxidase conjugated at 1/10000 dilution. Predicted band size : 33 kDa Blocking/Dilution buffer: 5 % NFDM/TBST.