

Datasheet for ABIN6243910
anti-NELL1 antibody (C-Term)[Go to Product page](#)

1 Image

Overview

Quantity:	80 µL
Target:	NELL1
Binding Specificity:	AA 696-728, C-Term
Reactivity:	Human, Mouse
Host:	Rabbit
Clonality:	Polyclonal
Conjugate:	This NELL1 antibody is un-conjugated
Application:	Western Blotting (WB)

Product Details

Immunogen:	This NELL1 antibody is generated from a rabbit immunized with a KLH conjugated synthetic peptide between 696-728 amino acids from the C-terminal region of human NELL1.
Clone:	RB49280
Isotype:	Ig Fraction
Purification:	This antibody is purified through a protein A column, followed by peptide affinity purification.

Target Details

Target:	NELL1
Alternative Name:	NELL1 (NELL1 Products)
Background:	Plays a role in the control of cell growth and differentiation. Promotes osteoblast cell

Target Details

differentiation and terminal mineralization.

Molecular Weight: 89635

UniProt: [Q92832](#)

Application Details

Application Notes: WB: 1:2000

Restrictions: For Research Use only

Handling

Format: Liquid

Buffer: Purified polyclonal antibody supplied in PBS with 0.09 % (W/V) sodium azide.

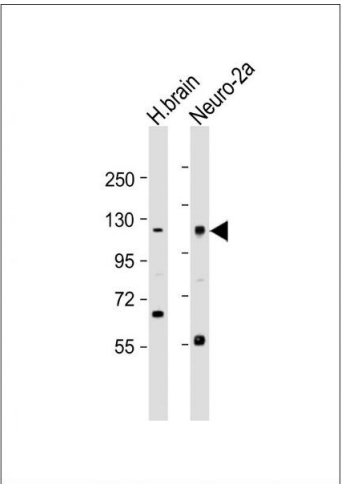
Preservative: Sodium azide

Precaution of Use: This product contains Sodium azide: a POISONOUS AND HAZARDOUS SUBSTANCE which should be handled by trained staff only.

Storage: 4 °C,-20 °C

Expiry Date: 6 months

Images



Western Blotting

Image 1. All lanes : Anti-NELL1 Antibody (C-term) at 1:2000 dilution Lane 1: human brain lysates Lane 2: Neuro-2a whole cell lysates Lysates/proteins at 20 µg per lane. Secondary Goat Anti-Rabbit IgG, (H+L), Peroxidase conjugated at 1/10000 dilution Predicted band size : 90 kDa Blocking/Dilution buffer: 5 % NFDM/TBST.