

Datasheet for ABIN6243944
anti-PDE2A antibody (AA 780-810)[Go to Product page](#)

1 Image

Overview

Quantity:	50 µL
Target:	PDE2A
Binding Specificity:	AA 780-810
Reactivity:	Mouse
Host:	Rabbit
Clonality:	Polyclonal
Conjugate:	This PDE2A antibody is un-conjugated
Application:	Western Blotting (WB)

Product Details

Immunogen:	This PDE2A antibody is generated from a rabbit immunized with a KLH conjugated synthetic peptide between 780-810 amino acids of mouse PDE2A.
Clone:	RB54686
Isotype:	IgG
Predicted Reactivity:	B, H, Rat
Purification:	This antibody is purified through a protein A column, followed by peptide affinity purification.

Target Details

Target:	PDE2A
Alternative Name:	PDE2A (PDE2A Products)

Target Details

Background:	Cyclic nucleotide phosphodiesterase with a dual- specificity for the second messengers cAMP and cGMP, which are key regulators of many important physiological processes.
Molecular Weight:	105619
UniProt:	Q922S4
Pathways:	cAMP Metabolic Process , Synaptic Membrane

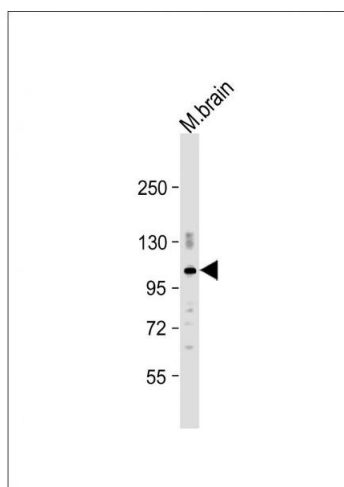
Application Details

Application Notes:	WB: 1:2000
Restrictions:	For Research Use only

Handling

Format:	Liquid
Buffer:	Purified polyclonal antibody supplied in PBS with 0.09 % (W/V) sodium azide.
Preservative:	Sodium azide
Precaution of Use:	This product contains Sodium azide: a POISONOUS AND HAZARDOUS SUBSTANCE which should be handled by trained staff only.
Storage:	4 °C, -20 °C
Expiry Date:	6 months

Images



Western Blotting

Image 1. Anti-PDE2A Antibody (C-Term) at 1:2000 dilution + mouse brain lysate Lysates/proteins at 20 µg per lane. Secondary Goat Anti-Rabbit IgG, (H+L), Peroxidase conjugated at 1/10000 dilution. Predicted band size : 106 kDa Blocking/Dilution buffer: 5 % NFDm/TBST.