

Datasheet for ABIN6243945
anti-PDHA1 antibody



[Go to Product page](#)

1 Image

Overview

Quantity:	400 µL
Target:	PDHA1
Reactivity:	Zebrafish (Danio rerio)
Host:	Rabbit
Clonality:	Polyclonal
Conjugate:	This PDHA1 antibody is un-conjugated
Application:	Western Blotting (WB)

Product Details

Immunogen:	This Zebrafish PDHA1 antibody is generated from rabbits immunized with a KLH conjugated synthetic peptide between 233~263 amino acids from the Central region of Zebrafish PDHA1.
Clone:	RB24303
Isotype:	Ig Fraction
Predicted Reactivity:	B, H, Pr, M, Pig, Rat
Purification:	This antibody is purified through a protein A column, followed by peptide affinity purification.

Target Details

Target:	PDHA1
Alternative Name:	PDHA1 (PDHA1 Products)
Background:	The pyruvate dehydrogenase (PDH) complex is a nuclear-encoded mitochondrial multienzyme

Target Details

complex that catalyzes the overall conversion of pyruvate to acetyl-CoA and CO₂, and provides the primary link between glycolysis and the tricarboxylic acid (TCA) cycle. The PDH complex is composed of multiple copies of three enzymatic components: pyruvate dehydrogenase (E1), dihydrolipoamide acetyltransferase (E2) and lipoamide dehydrogenase (E3). The E1 enzyme is a heterotetramer of two alpha and two beta subunits. This gene encodes the E1 alpha 1 subunit containing the E1 active site, and plays a key role in the function of the PDH complex. Mutations in this gene are associated with pyruvate dehydrogenase E1-alpha deficiency and X-linked Leigh syndrome.

Molecular Weight: 43741

UniProt: [Q6P948](#)

Pathways: [Warburg Effect](#)

Application Details

Application Notes: WB: 1:1000

Restrictions: For Research Use only

Handling

Format: Liquid

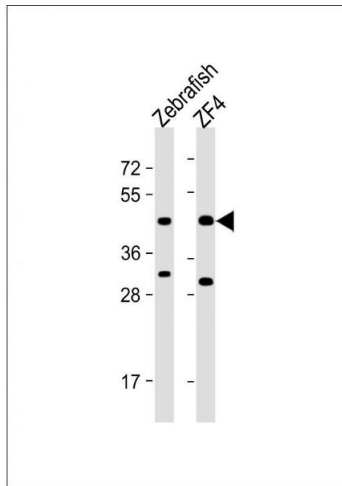
Buffer: Purified polyclonal antibody supplied in PBS with 0.09 % (W/V) sodium azide.

Preservative: Sodium azide

Precaution of Use: This product contains Sodium azide: a POISONOUS AND HAZARDOUS SUBSTANCE which should be handled by trained staff only.

Storage: 4 °C, -20 °C

Expiry Date: 6 months



Western Blotting

Image 1. All lanes : Anti-PDHA1 Antibody (Center) at 1:1000 dilution Lane 1: Zebrafish lysate Lane 2: ZF4 whole cell lysate Lysates/proteins at 20 µg per lane. Secondary Goat Anti-Rabbit IgG, (H+L), Peroxidase conjugated at 1/10000 dilution. Predicted band size : 44 kDa Blocking/Dilution buffer: 5 % NFDM/TBST.