



[Go to Product page](#)

Datasheet for ABIN6243949

anti-TMEM115 antibody (AA 249-283)

1 Image

Overview

Quantity:	200 µL
Target:	TMEM115
Binding Specificity:	AA 249-283
Reactivity:	Human
Host:	Rabbit
Clonality:	Polyclonal
Conjugate:	This TMEM115 antibody is un-conjugated
Application:	Western Blotting (WB)

Product Details

Immunogen:	This TMEM115 antibody is generated from a rabbit immunized with a KLH conjugated synthetic peptide between 249-283 amino acids from of human TMEM115.
Clone:	RB54333
Isotype:	Ig Fraction
Predicted Reactivity:	B, M
Purification:	This antibody is purified through a protein A column, followed by peptide affinity purification.

Target Details

Target:	TMEM115
Alternative Name:	TMEM115 (TMEM115 Products)

Target Details

Background:	May play a role in retrograde transport of proteins from the Golgi to the endoplasmic reticulum. May indirectly play a role in protein glycosylation in the Golgi.
Molecular Weight:	38197
UniProt:	Q12893

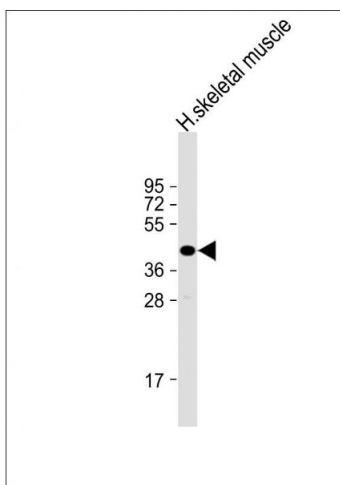
Application Details

Application Notes:	WB: 1:2000
Restrictions:	For Research Use only

Handling

Format:	Liquid
Buffer:	Purified polyclonal antibody supplied in PBS with 0.09 % (W/V) sodium azide.
Preservative:	Sodium azide
Precaution of Use:	This product contains Sodium azide: a POISONOUS AND HAZARDOUS SUBSTANCE which should be handled by trained staff only.
Storage:	4 °C,-20 °C
Expiry Date:	6 months

Images



Western Blotting

Image 1. Anti-TME Antibody (C-Term) at 1:2000 dilution + human skeletal muscle lysate Lysates/proteins at 20 µg per lane. Secondary Goat Anti-Rabbit IgG, (H+L), Peroxidase conjugated at 1/10000 dilution. Predicted band size : 38 kDa
Blocking/Dilution buffer: 5 % NFDN/TBST.