



[Go to Product page](#)

Datasheet for ABIN6243952  
**anti-POLG2 antibody (AA 205-234)**

3 Images

### Overview

Quantity:	400 µL
Target:	POLG2
Binding Specificity:	AA 205-234
Reactivity:	Human
Host:	Rabbit
Clonality:	Polyclonal
Conjugate:	This POLG2 antibody is un-conjugated
Application:	Western Blotting (WB), Immunohistochemistry (Paraffin-embedded Sections) (IHC (p))

### Product Details

Immunogen:	This POLG2 antibody is generated from rabbits immunized with a KLH conjugated synthetic peptide between 205-234 amino acids from the Central region of human POLG2.
Clone:	RB17519
Isotype:	Ig Fraction
Purification:	This antibody is prepared by Saturated Ammonium Sulfate (SAS) precipitation followed by dialysis against PBS.

### Target Details

Target:	POLG2
Alternative Name:	POLG2 ( <a href="#">POLG2 Products</a> )

## Target Details

---

**Background:** The accuracy of mitochondrial DNA (mtDNA) replication depends on the coordinated action of many nuclear-encoded proteins and on the correct balance of nucleotides within the mitochondrial matrix. mtDNA is replicated by DNA polymerase gamma, which is composed of a 140-kD catalytic subunit(POLG1) and a 55-kD accessory subunit (POLG2).

---

**Molecular Weight:** 54911

---

**NCBI Accession:** [NP\\_009146](#)

---

**UniProt:** [Q9UHN1](#)

---

## Application Details

---

**Application Notes:** WB: 1:1000. WB: 1:1000. IHC-P: 1:50~100

---

**Restrictions:** For Research Use only

---

## Handling

---

**Format:** Liquid

---

**Buffer:** Purified polyclonal antibody supplied in PBS with 0.09 % (W/V) sodium azide.

---

**Preservative:** Sodium azide

---

**Precaution of Use:** This product contains Sodium azide: a POISONOUS AND HAZARDOUS SUBSTANCE which should be handled by trained staff only.

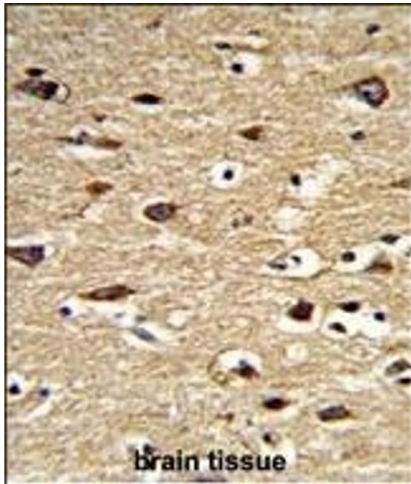
---

**Storage:** 4 °C,-20 °C

---

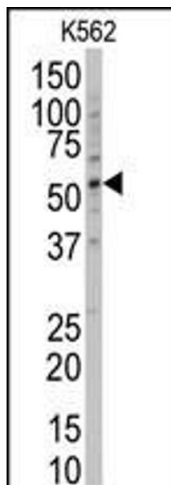
**Expiry Date:** 6 months

---



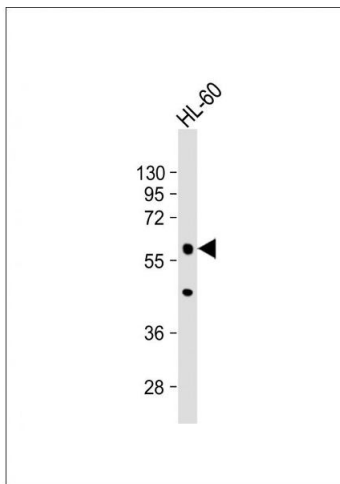
### Immunohistochemistry (Paraffin-embedded Sections)

**Image 1.** Formalin-fixed and paraffin-embedded human brain tissue reacted with POLG2 Antibody (Center), which was peroxidase-conjugated to the secondary antibody, followed by DAB staining. This data demonstrates the use of this antibody for immunohistochemistry, clinical relevance has not been evaluated.



### Western Blotting

**Image 2.** Western blot analysis of anti-POLG2 Antibody (Center) (ABIN6243952 and ABIN6578922) in K562 cell line lysates (35 µg/lane). POLG2 (arrow) was detected using the purified Pab.



### Western Blotting

**Image 3.** Anti-POLG2 Antibody (Center) at 1:1000 dilution + HL-60 whole cell lysate Lysates/proteins at 20 µg per lane. Secondary Goat Anti-Rabbit IgG, (H+L), Peroxidase conjugated at 1/10000 dilution. Predicted band size : 55 kDa Blocking/Dilution buffer: 5 % NFDm/TBST.