

Datasheet for ABIN6243956  
**anti-PPP2R1B antibody (N-Term)**[Go to Product page](#)

## 1 Image

## Overview

Quantity:	400 µL
Target:	PPP2R1B
Binding Specificity:	N-Term
Reactivity:	Human
Host:	Rabbit
Clonality:	Polyclonal
Conjugate:	This PPP2R1B antibody is un-conjugated
Application:	Western Blotting (WB)

## Product Details

Immunogen:	This PPP2R1B antibody is generated from a rabbit immunized with a KLH conjugated synthetic peptide between 5~37 amino acids from the N-terminal region of human PPP2R1B.
Clone:	RB51483
Isotype:	Ig Fraction
Purification:	This antibody is purified through a protein A column, followed by peptide affinity purification.

## Target Details

Target:	PPP2R1B
Alternative Name:	PPP2R1B ( <a href="#">PPP2R1B Products</a> )
Background:	The PR65 subunit of protein phosphatase 2A serves as a scaffolding molecule to coordinate

## Target Details

the assembly of the catalytic subunit and a variable regulatory B subunit.

Molecular Weight: 66214

UniProt: [P30154](#)

Pathways: [PI3K-Akt Signaling](#), [Mitotic G1-G1/S Phases](#), [Hepatitis C](#), [Toll-Like Receptors Cascades](#)

## Application Details

Application Notes: WB: 1:1000

Restrictions: For Research Use only

## Handling

Format: Liquid

Buffer: Purified polyclonal antibody supplied in PBS with 0.09 % (W/V) sodium azide.

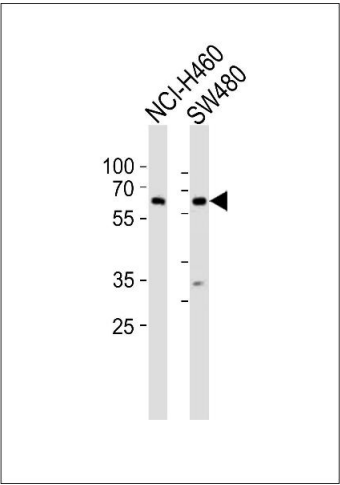
Preservative: Sodium azide

Precaution of Use: This product contains Sodium azide: a POISONOUS AND HAZARDOUS SUBSTANCE which should be handled by trained staff only.

Storage: 4 °C,-20 °C

Expiry Date: 6 months

## Images



### Western Blotting

**Image 1.** Western blot analysis of lysates from NCI-, S cell line (from left to right), using P2R1B Antibody (N-term) (ABIN6243956 and ABIN6577709). (ABIN6243956 and ABIN6577709) was diluted at 1:1000 at each lane. A goat anti-rabbit IgG H&L(HRP) at 1:10000 dilution was used as the secondary antibody. Lysates at 20 µg per lane.