



[Go to Product page](#)

Datasheet for ABIN6243963  
**anti-PYCRL antibody (AA 139-171)**

1 Image

### Overview

Quantity:	400 µL
Target:	PYCRL
Binding Specificity:	AA 139-171
Reactivity:	Human
Host:	Rabbit
Clonality:	Polyclonal
Conjugate:	This PYCRL antibody is un-conjugated
Application:	Western Blotting (WB)

### Product Details

Immunogen:	This PYCRL antibody is generated from a rabbit immunized with a KLH conjugated synthetic peptide between 139-171 amino acids from the Central region of human PYCRL.
Clone:	RB52897
Isotype:	Ig Fraction
Purification:	This antibody is purified through a protein A column, followed by peptide affinity purification.

### Target Details

Target:	PYCRL
Alternative Name:	PYCRL ( <a href="#">PYCRL Products</a> )
Molecular Weight:	28663

## Target Details

UniProt: [Q53H96](#)

## Application Details

Application Notes: WB: 1:2000

Restrictions: For Research Use only

## Handling

Format: Liquid

Buffer: Purified polyclonal antibody supplied in PBS with 0.09 % (W/V) sodium azide.

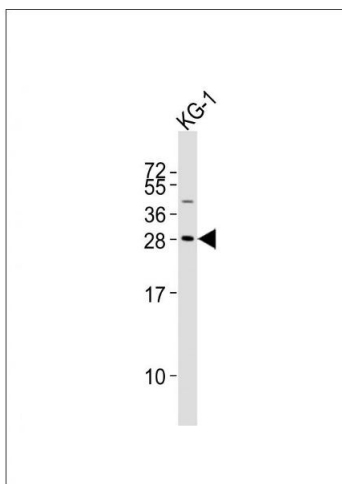
Preservative: Sodium azide

Precaution of Use: This product contains Sodium azide: a POISONOUS AND HAZARDOUS SUBSTANCE which should be handled by trained staff only.

Storage: 4 °C,-20 °C

Expiry Date: 6 months

## Images



### Western Blotting

**Image 1.** Anti-PYCRL Antibody (Center) at 1:2000 dilution + KG-1 whole cell lysates Lysates/proteins at 20 µg per lane. Secondary Goat Anti-Rabbit IgG, (H+L), Peroxidase conjugated at 1/10000 dilution Predicted band size : 29 kDa Blocking/Dilution buffer: 5 % NFD/MTBST.