

Datasheet for ABIN6243964
anti-REG3A antibody (AA 105-139)[Go to Product page](#)

1 Image

Overview

Quantity:	400 µL
Target:	REG3A
Binding Specificity:	AA 105-139
Reactivity:	Human
Host:	Rabbit
Clonality:	Polyclonal
Conjugate:	This REG3A antibody is un-conjugated
Application:	Western Blotting (WB)

Product Details

Immunogen:	This REG3A antibody is generated from a rabbit immunized with a KLH conjugated synthetic peptide between 105-139 amino acids from the Central region of human REG3A.
Clone:	RB48750
Isotype:	Ig Fraction
Purification:	This antibody is purified through a protein A column, followed by peptide affinity purification.

Target Details

Target:	REG3A
Alternative Name:	REG3A (REG3A Products)
Background:	Bactericidal C-type lectin which acts exclusively against Gram-positive bacteria and mediates

Target Details

bacterial killing by binding to surface-exposed carbohydrate moieties of peptidoglycan.
Regulates keratinocyte proliferation and differentiation after skin injury via activation of EXTL3-PI3K-AKT signaling pathway.

Molecular Weight: 19395

UniProt: [Q06141](#)

Application Details

Application Notes: WB: 1:1000

Restrictions: For Research Use only

Handling

Format: Liquid

Buffer: Purified polyclonal antibody supplied in PBS with 0.09 % (W/V) sodium azide.

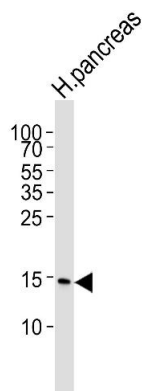
Preservative: Sodium azide

Precaution of Use: This product contains Sodium azide: a POISONOUS AND HAZARDOUS SUBSTANCE which should be handled by trained staff only.

Storage: 4 °C, -20 °C

Expiry Date: 6 months

Images



Western Blotting

Image 1. Western blot analysis of lysate from human pancreas tissue lysate, using REG3A Antibody (Center) (ABIN6243964 and ABIN6577449). (ABIN6243964 and ABIN6577449) was diluted at 1:1000. A goat anti-rabbit IgG H&L(HRP) at 1:5000 dilution was used as the secondary antibody. Lysate at 35 µg.