



[Go to Product page](#)

Datasheet for ABIN6243967  
**anti-TAL1 antibody (C-Term)**

1 Image

### Overview

Quantity:	400 µL
Target:	TAL1
Binding Specificity:	AA 241-275, C-Term
Reactivity:	Human
Host:	Rabbit
Clonality:	Polyclonal
Conjugate:	This TAL1 antibody is un-conjugated
Application:	Western Blotting (WB)

### Product Details

Immunogen:	This TAL1 antibody is generated from rabbits immunized with a KLH conjugated synthetic peptide between 241-275 amino acids from the C-terminal region of human TAL1.
Clone:	RB51416
Isotype:	Ig Fraction
Purification:	This antibody is purified through a protein A column, followed by peptide affinity purification.

### Target Details

Target:	TAL1
Alternative Name:	TAL1 ( <a href="#">TAL1 Products</a> )
Background:	Implicated in the genesis of hemopoietic malignancies. It may play an important role in

## Target Details

hemopoietic differentiation. Serves as a positive regulator of erythroid differentiation (By similarity).

Molecular Weight: 34271

UniProt: [P17542](#)

Pathways: [Stem Cell Maintenance](#)

## Application Details

Application Notes: WB: 1:1000

Restrictions: For Research Use only

## Handling

Format: Liquid

Buffer: Purified polyclonal antibody supplied in PBS with 0.09 % (W/V) sodium azide.

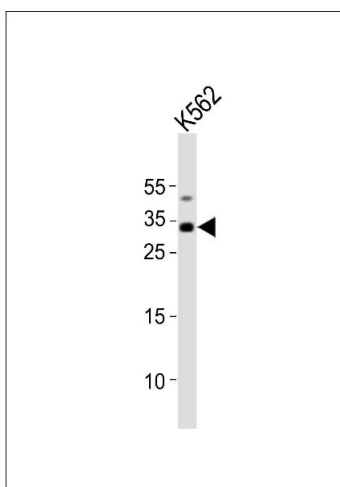
Preservative: Sodium azide

Precaution of Use: This product contains Sodium azide: a POISONOUS AND HAZARDOUS SUBSTANCE which should be handled by trained staff only.

Storage: 4 °C, -20 °C

Expiry Date: 6 months

## Images



### Western Blotting

**Image 1.** Western blot analysis of lysate from K562 cell line, using TAL1 Antibody (C-term) (ABIN6243967 and ABIN6577780). (ABIN6243967 and ABIN6577780) was diluted at 1:1000. A goat anti-rabbit IgG H&L(HRP) at 1:10000 dilution was used as the secondary antibody. Lysate at 20 µg.