



Datasheet for ABIN6243975  
**anti-SPPL2B antibody (AA 196-229)**



[Go to Product page](#)

1 Image

Overview

Quantity:	200 µL
Target:	SPPL2B
Binding Specificity:	AA 196-229
Reactivity:	Human
Host:	Rabbit
Clonality:	Polyclonal
Conjugate:	This SPPL2B antibody is un-conjugated
Application:	Western Blotting (WB)

Product Details

Immunogen:	This SPPL2B antibody is generated from a rabbit immunized with a KLH conjugated synthetic peptide between 196-229 amino acids from the Central region of human SPPL2B.
Clone:	RB53139
Isotype:	Ig Fraction
Purification:	This antibody is purified through a protein A column, followed by peptide affinity purification.

Target Details

Target:	SPPL2B
Alternative Name:	SPPL2B ( <a href="#">SPPL2B Products</a> )
Background:	Intramembrane-cleaving aspartic protease (I-CLiP) that cleaves type II membrane signal

## Target Details

peptides in the hydrophobic plane of the membrane. Functions in ITM2B and TNF processing. Catalyzes the intramembrane cleavage of the anchored fragment of shed TNF- alpha (TNF), which promotes the release of the intracellular domain (ICD) for signaling to the nucleus. May play a role in the regulation of innate and adaptive immunity.

Molecular Weight: 64644

UniProt: [Q8TCT7](#)

## Application Details

Application Notes: WB: 1:2000

Restrictions: For Research Use only

## Handling

Format: Liquid

Buffer: Purified polyclonal antibody supplied in PBS with 0.09 % (W/V) sodium azide.

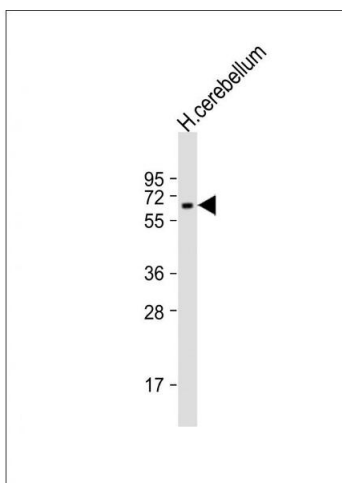
Preservative: Sodium azide

Precaution of Use: This product contains Sodium azide: a POISONOUS AND HAZARDOUS SUBSTANCE which should be handled by trained staff only.

Storage: 4 °C,-20 °C

Expiry Date: 6 months

## Images



### Western Blotting

**Image 1.** Anti-SL2B Antibody (Center) at 1:2000 dilution + human cerebellum lysates Lysates/proteins at 20 µg per lane. Secondary Goat Anti-Rabbit IgG, (H+L), Peroxidase conjugated at 1/10000 dilution. Predicted band size : 65 kDa  
Blocking/Dilution buffer: 5 % NFDm/TBST.