



[Go to Product page](#)

Datasheet for ABIN6243981
anti-ROS1 antibody (C-Term)

1 Image

Overview

Quantity:	400 µL
Target:	ROS1
Binding Specificity:	AA 1744-1777, C-Term
Reactivity:	Human
Host:	Rabbit
Clonality:	Polyclonal
Conjugate:	This ROS1 antibody is un-conjugated
Application:	Western Blotting (WB)

Product Details

Immunogen:	This ROS1 antibody is generated from a rabbit immunized with a KLH conjugated synthetic peptide between 1744-1777 amino acids from the C-terminal region of human ROS1.
Clone:	RB50575
Isotype:	Ig Fraction
Purification:	This antibody is purified through a protein A column, followed by peptide affinity purification.

Target Details

Target:	ROS1
Alternative Name:	ROS1 (ROS1 Products)
Background:	Orphan receptor tyrosine kinase (RTK) that plays a role in epithelial cell differentiation and

Target Details

regionalization of the proximal epididymal epithelium. May activate several downstream signaling pathways related to cell differentiation, proliferation, growth and survival including the PI3 kinase-mTOR signaling pathway. Mediates the phosphorylation of PTPN11, an activator of this pathway. May also phosphorylate and activate the transcription factor STAT3 to control anchorage-independent cell growth. Mediates the phosphorylation and the activation of VAV3, a guanine nucleotide exchange factor regulating cell morphology. May activate other downstream signaling proteins including AKT1, MAPK1, MAPK3, IRS1 and PLCG2.

Molecular Weight: 263915

UniProt: [P08922](#)

Pathways: [RTK Signaling](#)

Application Details

Application Notes: WB: 1:1000

Restrictions: For Research Use only

Handling

Format: Liquid

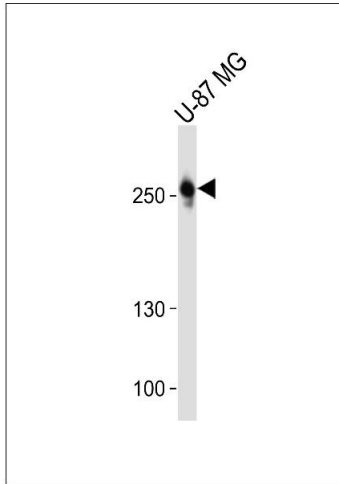
Buffer: Purified polyclonal antibody supplied in PBS with 0.09 % (W/V) sodium azide.

Preservative: Sodium azide

Precaution of Use: This product contains Sodium azide: a POISONOUS AND HAZARDOUS SUBSTANCE which should be handled by trained staff only.

Storage: 4 °C,-20 °C

Expiry Date: 6 months



Western Blotting

Image 1. Western blot analysis of lysate from U-87 MG cell line, using ROS1 Antibody (C-term) (ABIN6243981 and ABIN6577651). (ABIN6243981 and ABIN6577651) was diluted at 1:1000. A goat anti-rabbit IgG H&L(HRP) at 1:10000 dilution was used as the secondary antibody. Lysate at 20 µg.