

Datasheet for ABIN6243988

anti-RENT1/UPF1 antibody (AA 583-612)

1 Image

1 Publication



[Go to Product page](#)

Overview

Quantity:	400 µL
Target:	RENT1/UPF1 (UPF1)
Binding Specificity:	AA 583-612
Reactivity:	Human
Host:	Rabbit
Clonality:	Polyclonal
Conjugate:	This RENT1/UPF1 antibody is un-conjugated
Application:	Western Blotting (WB)

Product Details

Immunogen:	This RENT1 antibody is generated from rabbits immunized with a KLH conjugated synthetic peptide between 583-612 amino acids from the Central region of human RENT1.
Clone:	RB8354
Isotype:	Ig Fraction
Predicted Reactivity:	M
Purification:	This antibody is prepared by Saturated Ammonium Sulfate (SAS) precipitation followed by dialysis against PBS.

Target Details

Target:	RENT1/UPF1 (UPF1)
---------	-------------------

Target Details

Alternative Name:	RENT1 (UPF1 Products)
Background:	RENT1 is part of a post-splicing multiprotein complex involved in both mRNA nuclear export and mRNA surveillance. mRNA surveillance detects exported mRNAs with truncated open reading frames and initiates nonsense-mediated mRNA decay (NMD). When translation ends upstream from the last exon-exon junction, this triggers NMD to degrade mRNAs containing premature stop codons. This protein is located only in the cytoplasm. When translation ends, it interacts with the protein that is a functional homolog of yeast Upf2p to trigger mRNA decapping.
Molecular Weight:	124345
NCBI Accession:	NP_002902
UniProt:	Q92900
Pathways:	SARS-CoV-2 Protein Interactome

Application Details

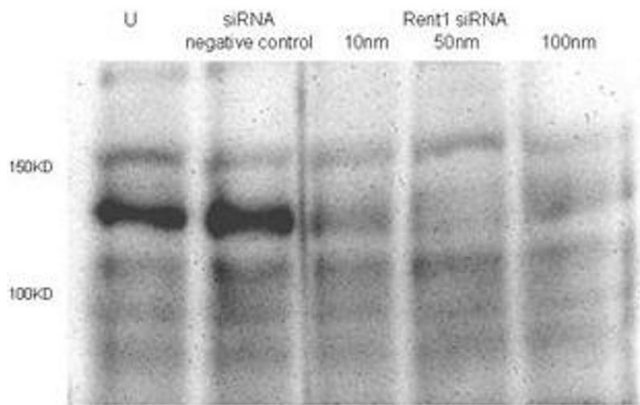
Application Notes:	WB: 1:1000
Restrictions:	For Research Use only

Handling

Format:	Liquid
Buffer:	Purified polyclonal antibody supplied in PBS with 0.09 % (W/V) sodium azide.
Preservative:	Sodium azide
Precaution of Use:	This product contains Sodium azide: a POISONOUS AND HAZARDOUS SUBSTANCE which should be handled by trained staff only.
Storage:	4 °C,-20 °C
Expiry Date:	6 months

Publications

Product cited in:	Sanchez, Penfornis, Oskowitz, Boonjindasup, Cai, Dhule, Rowan, Kelekar, Krause, Pochampally: "Activation of autophagy in mesenchymal stem cells provides tumor stromal support." in: Carcinogenesis , Vol. 32, Issue 7, pp. 964-72, (2011) (PubMed).
-------------------	---



Western Blotting

Image 1. Total lysates (50 μ g per lane) from HeLa cells untransfected (U) or transfected with negative siRNA control or Rent1 siRNAs of 10nm, 50nm to 100nm. Immunostaining was with polyclonal rabbit Rent1 Antibody ((ABIN6243988 and ABIN6577371)) overnight. The membrane was incubated with donkey anti-rabbit antibody for 1 hour. Antibody-reactive bands were revealed by chemiluminescence. Rent1 protein migrated between 100KD and 150KD. Data courtesy of Dr. Jingqiong Kang, Department of Neurology, Vanderbilt University.