

Datasheet for ABIN6243999
anti-SAMM50 antibody (AA 346-380)[Go to Product page](#)

1 Image

Overview

Quantity:	400 µL
Target:	SAMM50
Binding Specificity:	AA 346-380
Reactivity:	Human
Host:	Rabbit
Clonality:	Polyclonal
Conjugate:	This SAMM50 antibody is un-conjugated
Application:	Western Blotting (WB)

Product Details

Immunogen:	This SAMM50 antibody is generated from a rabbit immunized with a KLH conjugated synthetic peptide between 346-380 amino acids from the Central region of human SAMM50.
Clone:	RB50095
Isotype:	Ig Fraction
Predicted Reactivity:	M, Rat
Purification:	This antibody is purified through a protein A column, followed by peptide affinity purification.

Target Details

Target:	SAMM50
Alternative Name:	SAMM50 (SAMM50 Products)

Target Details

Background: May be required for the assembly pathway of mitochondrial outer membrane proteins (By similarity).

Molecular Weight: 51976

UniProt: [Q9Y512](#)

Application Details

Application Notes: WB: 1:1000

Restrictions: For Research Use only

Handling

Format: Liquid

Buffer: Purified polyclonal antibody supplied in PBS with 0.09 % (W/V) sodium azide.

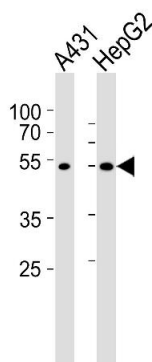
Preservative: Sodium azide

Precaution of Use: This product contains Sodium azide: a POISONOUS AND HAZARDOUS SUBSTANCE which should be handled by trained staff only.

Storage: 4 °C,-20 °C

Expiry Date: 6 months

Images



Western Blotting

Image 1. Western blot analysis of lysates from A431, HepG2 cell line (from left to right), using SM50 Antibody (Center) (ABIN6243999 and ABIN6577465). (ABIN6243999 and ABIN6577465) was diluted at 1:1000 at each lane. A goat anti-rabbit IgG H&L(HRP) at 1:5000 dilution was used as the secondary antibody. Lysates at 35 µg per lane.