

Datasheet for ABIN6244000
anti-SEC24D antibody (AA 235-266)[Go to Product page](#)

1 Image

Overview

Quantity:	200 µL
Target:	SEC24D
Binding Specificity:	AA 235-266
Reactivity:	Human
Host:	Rabbit
Clonality:	Polyclonal
Conjugate:	This SEC24D antibody is un-conjugated
Application:	Western Blotting (WB)

Product Details

Immunogen:	This SEC24D antibody is generated from a rabbit immunized with a KLH conjugated synthetic peptide between 235-266 amino acids from human SEC24D.
Clone:	RB55324
Isotype:	Ig Fraction
Purification:	This antibody is purified through a protein A column, followed by peptide affinity purification.

Target Details

Target:	SEC24D
Alternative Name:	SEC24D (SEC24D Products)
Background:	Component of the COPII coat, that covers ER-derived vesicles involved in transport from the

Target Details

endoplasmic reticulum to the Golgi apparatus. COPII acts in the cytoplasm to promote the transport of secretory, plasma membrane, and vacuolar proteins from the endoplasmic reticulum to the Golgi complex.

Molecular Weight: 113010

UniProt: [O94855](#)

Application Details

Application Notes: WB: 1:2000

Restrictions: For Research Use only

Handling

Format: Liquid

Buffer: Purified polyclonal antibody supplied in PBS with 0.09 % (W/V) sodium azide.

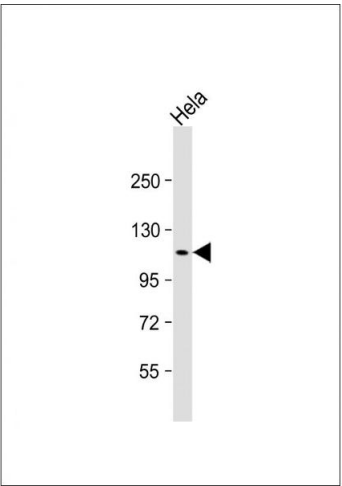
Preservative: Sodium azide

Precaution of Use: This product contains Sodium azide: a POISONOUS AND HAZARDOUS SUBSTANCE which should be handled by trained staff only.

Storage: 4 °C, -20 °C

Expiry Date: 6 months

Images



Western Blotting

Image 1. Anti-SEC24D Antibody (N-Term) at 1:2000 dilution + HeLa whole cell lysate Lysates/proteins at 20 µg per lane. Secondary Goat Anti-Rabbit IgG, (H+L), Peroxidase conjugated at 1/10000 dilution. Predicted band size : 113 kDa Blocking/Dilution buffer: 5 % NFDM/TBST.