

Datasheet for ABIN6244001

anti-SEMA3E antibody[Go to Product page](#)**1** Image

Overview

Quantity:	400 µL
Target:	SEMA3E
Reactivity:	Human
Host:	Rabbit
Clonality:	Polyclonal
Conjugate:	This SEMA3E antibody is un-conjugated
Application:	Western Blotting (WB)

Product Details

Immunogen:	This SEMA3E antibody is generated from a rabbit immunized with a KLH recombinant protein.
Clone:	RB52398
Isotype:	Ig Fraction
Purification:	This antibody is purified through a protein A column, followed by peptide affinity purification.

Target Details

Target:	SEMA3E
Alternative Name:	SEMA3E (SEMA3E Products)
Background:	Plays an important role in signaling via the cell surface receptor PLXND1. Mediates reorganization of the actin cytoskeleton, leading to the retraction of cell projections. Promotes focal adhesion disassembly and inhibits adhesion of endothelial cells to the extracellular matrix. Regulates angiogenesis, both during embryogenesis and after birth. Can down- regulate

Target Details

sprouting angiogenesis. Required for normal vascular patterning during embryogenesis. Plays an important role in ensuring the specificity of synapse formation (By similarity).

Molecular Weight: 89228

UniProt: [O15041](#)

Application Details

Application Notes: WB: 1:2000

Restrictions: For Research Use only

Handling

Format: Liquid

Buffer: Purified polyclonal antibody supplied in PBS with 0.09 % (W/V) sodium azide.

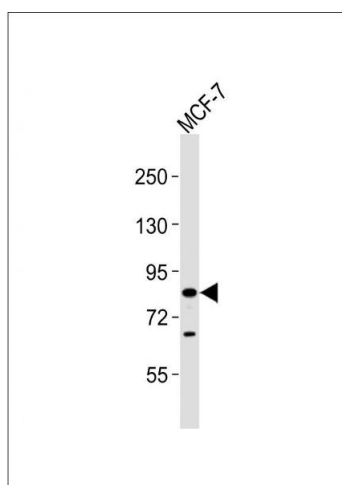
Preservative: Sodium azide

Precaution of Use: This product contains Sodium azide: a POISONOUS AND HAZARDOUS SUBSTANCE which should be handled by trained staff only.

Storage: 4 °C,-20 °C

Expiry Date: 6 months

Images



Western Blotting

Image 1. Anti-SEE Antibody at 1:2000 dilution + MCF-7 whole cell lysates Lysates/proteins at 20 µg per lane. Secondary Goat Anti-Rabbit IgG, (H+L), Peroxidase conjugated at 1/10000 dilution Predicted band size : 89 kDa Blocking/Dilution buffer: 5 % NFDM/TBST.