

Datasheet for ABIN6244004  
**anti-SOX15 antibody (C-Term)**[Go to Product page](#)

## 1 Image

## Overview

Quantity:	400 µL
Target:	SOX15
Binding Specificity:	AA 152-165, C-Term
Reactivity:	Human
Host:	Rabbit
Clonality:	Polyclonal
Conjugate:	This SOX15 antibody is un-conjugated
Application:	Western Blotting (WB)

## Product Details

Immunogen:	This (Mouse) Sox15 antibody is generated from a rabbit immunized with a KLH conjugated synthetic peptide between 152-165 amino acids from the C-terminal region of human (Mouse) Sox15.
Clone:	RB51530
Isotype:	Ig Fraction
Purification:	This antibody is purified through a protein A column, followed by peptide affinity purification.

## Target Details

Target:	SOX15
Alternative Name:	Sox15 ( <a href="#">SOX15 Products</a> )

## Target Details

Molecular Weight: 25311

UniProt: [P43267](#)

## Application Details

Application Notes: WB: 1:1000

Restrictions: For Research Use only

## Handling

Format: Liquid

Buffer: Purified polyclonal antibody supplied in PBS with 0.09 % (W/V) sodium azide.

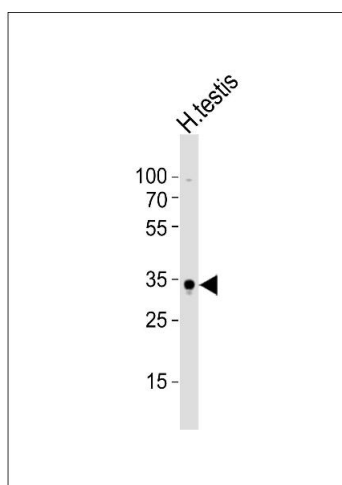
Preservative: Sodium azide

Precaution of Use: This product contains Sodium azide: a POISONOUS AND HAZARDOUS SUBSTANCE which should be handled by trained staff only.

Storage: 4 °C, -20 °C

Expiry Date: 6 months

## Images



### Western Blotting

**Image 1.** Western blot analysis of lysate from human testis tissue lysate, using Sox15 Antibody (C-term) (ABIN6244004 and ABIN6577781). (ABIN6244004 and ABIN6577781) was diluted at 1:1000. A goat anti-rabbit IgG H&L(HRP) at 1:10000 dilution was used as the secondary antibody. Lysate at 20 µg.