

Datasheet for ABIN6244012
anti-SPDYA antibody (AA 147-175)

4 Images

1 Publication

[Go to Product page](#)

Overview

Quantity:	400 µL
Target:	SPDYA
Binding Specificity:	AA 147-175
Reactivity:	Human
Host:	Rabbit
Clonality:	Polyclonal
Conjugate:	This SPDYA antibody is un-conjugated
Application:	Western Blotting (WB), Immunohistochemistry (Paraffin-embedded Sections) (IHC (p)), Flow Cytometry (FACS)

Product Details

Immunogen:	This SPDYA antibody is generated from rabbits immunized with a KLH conjugated synthetic peptide between 147-175 amino acids from the Central region of human SPDYA.
Clone:	RB24658
Isotype:	Ig Fraction
Predicted Reactivity:	M, Rat
Purification:	This antibody is purified through a protein A column, followed by peptide affinity purification.

Target Details

Target:	SPDYA
---------	-------

Target Details

Alternative Name:	SPDYA (SPDYA Products)
Background:	SPDYA (speedy homolog A (Drosophila)) regulates the G1/S phase transition of the cell cycle by binding and activating CDC2, CDK2 and CDKN1B/KIP1. SPDYA can activate CDK2 without promoting CDK2 phosphorylation. SPDYA mediates cell survival during the DNA damage process through activation of CDK2.
Molecular Weight:	36463
NCBI Accession:	NP_001008779 , NP_001136106 , NP_877433
UniProt:	Q5MJ70

Application Details

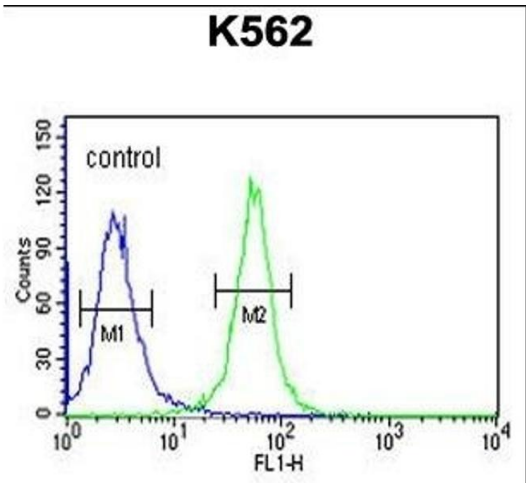
Application Notes:	WB: 1:1000. WB: 1:1000. IHC-P: 1:50~100. FC: 1:10~50
Restrictions:	For Research Use only

Handling

Format:	Liquid
Buffer:	Purified polyclonal antibody supplied in PBS with 0.09 % (W/V) sodium azide.
Preservative:	Sodium azide
Precaution of Use:	This product contains Sodium azide: a POISONOUS AND HAZARDOUS SUBSTANCE which should be handled by trained staff only.
Storage:	4 °C,-20 °C
Expiry Date:	6 months

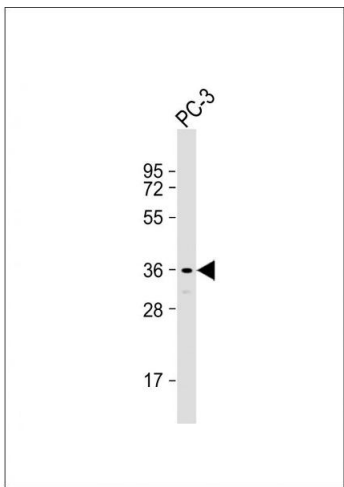
Publications

Product cited in:	Cao, Yang, Wang, Xu, Zhou, Cheng, Liu, Cheng, Long, Gu: "Temporal-spatial expressions of Spy1 in rat sciatic nerve after crush." in: Cellular and molecular neurobiology , Vol. 33, Issue 2, pp. 213-21, (2013) (PubMed).
-------------------	--



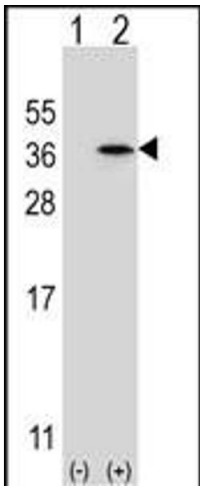
Flow Cytometry

Image 1. SPDYA Antibody (Center) (ABIN6244012 and ABIN6579062) flow cytometric analysis of K562 cells (right histogram) compared to a negative control cell (left histogram). FITC-conjugated goat-anti-rabbit secondary antibodies were used for the analysis.



Western Blotting

Image 2. Anti-SPDYA Antibody (Center) at 1:1000 dilution + PC-3 whole cell lysate Lysates/proteins at 20 µg per lane. Secondary Goat Anti-Rabbit IgG, (H+L), Peroxidase conjugated at 1/10000 dilution. Predicted band size : 36 kDa Blocking/Dilution buffer: 5 % NFDm/TBST.



Western Blotting

Image 3. Western blot analysis of SPDYA (arrow) using rabbit polyclonal SPDYA Antibody (Center) (ABIN6244012 and ABIN6579062). 293 cell lysates (2 µg/lane) either nontransfected (Lane 1) or transiently transfected (Lane 2) with the SPDYA gene.

Please check the [product details page](#) for more images. Overall 4 images are available for ABIN6244012.