

Datasheet for ABIN6244026
anti-TLE1 antibody (N-Term)

2 Images

[Go to Product page](#)

Overview

Quantity:	400 µL
Target:	TLE1
Binding Specificity:	AA 187-221, N-Term
Reactivity:	Human
Host:	Rabbit
Clonality:	Polyclonal
Conjugate:	This TLE1 antibody is un-conjugated
Application:	Western Blotting (WB), Immunofluorescence (IF)

Product Details

Immunogen:	This TLE1 antibody is generated from a rabbit immunized with a KLH conjugated synthetic peptide between 187-221 amino acids from the N-terminal region of human TLE1.
Clone:	RB51384
Isotype:	Ig Fraction
Purification:	This antibody is purified through a protein A column, followed by peptide affinity purification.

Target Details

Target:	TLE1
Alternative Name:	TLE1 (TLE1 Products)
Background:	Transcriptional corepressor that binds to a number of transcription factors. Inhibits NF-kappa-

Target Details

B-regulated gene expression. Inhibits the transcriptional activation mediated by FOXA2, and by CTNNB1 and TCF family members in Wnt signaling. The effects of full-length TLE family members may be modulated by association with dominant-negative AES. Unusual function as coactivator for ESRRG.

Molecular Weight: 83201

UniProt: [Q04724](#)

Pathways: [WNT Signaling](#), [SARS-CoV-2 Protein Interactome](#)

Application Details

Application Notes: IF: 1:25. WB: 1:1000

Restrictions: For Research Use only

Handling

Format: Liquid

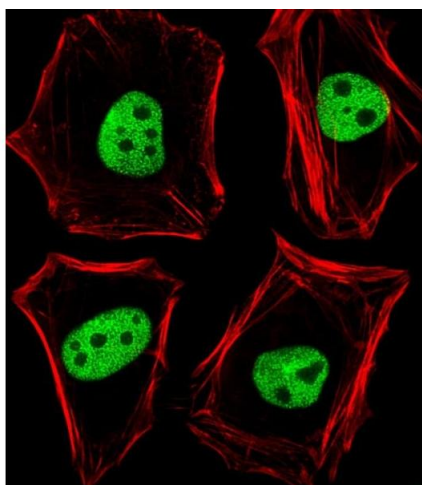
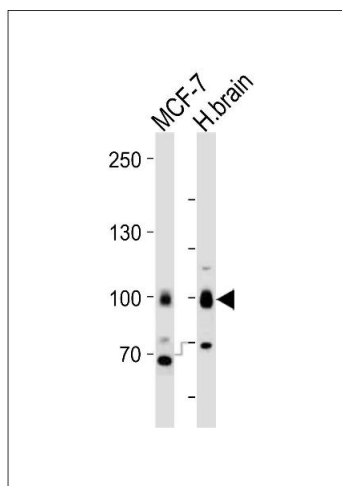
Buffer: Purified polyclonal antibody supplied in PBS with 0.09 % (W/V) sodium azide.

Preservative: Sodium azide

Precaution of Use: This product contains Sodium azide: a POISONOUS AND HAZARDOUS SUBSTANCE which should be handled by trained staff only.

Storage: 4 °C, -20 °C

Expiry Date: 6 months



Western Blotting

Image 1. Western blot analysis of lysates from MCF-7, H.brain cell line (from left to right), using TLE1 Antibody (N-term) (ABIN6244026 and ABIN6577784). (ABIN6244026 and ABIN6577784) was diluted at 1:1000 at each lane. A goat anti-rabbit IgG H&L(HRP) at 1:10000 dilution was used as the secondary antibody. Lysates at 20 µg per lane.

Immunofluorescence

Image 2. Fluorescent image of HeLa cells stained with TLE1 Antibody (N-term) (ABIN6244026 and ABIN6577784). (ABIN6244026 and ABIN6577784) was diluted at 1:25 dilution. An Alexa Fluor 488-conjugated goat anti-rabbit IgG at 1:400 dilution was used as the secondary antibody (green). Cytoplasmic actin was counterstained with Alexa Fluor® 555 conjugated with Phalloidin (red).