



[Go to Product page](#)

Datasheet for ABIN6244032
anti-UBTFL1 antibody (AA 186-220)

1 Image

Overview

Quantity:	400 µL
Target:	UBTFL1
Binding Specificity:	AA 186-220
Reactivity:	Mouse
Host:	Rabbit
Clonality:	Polyclonal
Conjugate:	This UBTFL1 antibody is un-conjugated
Application:	Western Blotting (WB)

Product Details

Immunogen:	This Mouse Ubtfl1 antibody is generated from a rabbit immunized with a KLH conjugated synthetic peptide between 186-220 amino acids from the Central region of mouse Ubtfl1.
Clone:	RB51511
Isotype:	Ig Fraction
Purification:	This antibody is purified through a protein A column, followed by peptide affinity purification.

Target Details

Target:	UBTFL1
Alternative Name:	Ubtfl1 (UBTFL1 Products)
Background:	Essential for proliferation of the inner cell mass and trophectodermal cells in peri-implantation

Target Details

development.

Molecular Weight: 46131

UniProt: [Q3USZ2](#)

Application Details

Application Notes: WB: 1:1000

Restrictions: For Research Use only

Handling

Format: Liquid

Buffer: Purified polyclonal antibody supplied in PBS with 0.09 % (W/V) sodium azide.

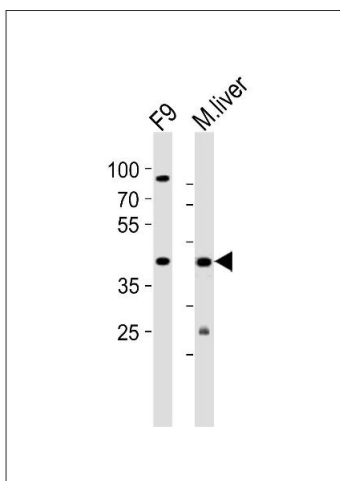
Preservative: Sodium azide

Precaution of Use: This product contains Sodium azide: a POISONOUS AND HAZARDOUS SUBSTANCE which should be handled by trained staff only.

Storage: 4 °C,-20 °C

Expiry Date: 6 months

Images



Western Blotting

Image 1. Western blot analysis of lysates from mouse F9 cell line and mouse liver tissue (from left to right), using (Mouse) Ubtfl1 Antibody (Center) (ABIN6244032 and ABIN6577748). (ABIN6244032 and ABIN6577748) was diluted at 1:1000 at each lane. A goat anti-rabbit IgG H&L(HRP) at 1:10000 dilution was used as the secondary antibody. Lysates at 20 µg per lane.