



[Go to Product page](#)

Datasheet for ABIN6244037

anti-Phospholipase C gamma 1 antibody (AA 456-488)

2 Images

Overview

Quantity:	400 µL
Target:	Phospholipase C gamma 1 (PLCG1)
Binding Specificity:	AA 456-488
Reactivity:	Human
Host:	Rabbit
Clonality:	Polyclonal
Conjugate:	This Phospholipase C gamma 1 antibody is un-conjugated
Application:	Western Blotting (WB)

Product Details

Immunogen:	This PLCG1 antibody is generated from a rabbit immunized with a KLH conjugated synthetic peptide between 456-488 amino acids from the Central region of human PLCG1.
Clone:	RB53783
Isotype:	Ig Fraction
Purification:	This antibody is purified through a protein A column, followed by peptide affinity purification.

Target Details

Target:	Phospholipase C gamma 1 (PLCG1)
Alternative Name:	PLCG1 (PLCG1 Products)
Background:	Mediates the production of the second messenger molecules diacylglycerol (DAG) and inositol

Target Details

1,4,5-trisphosphate (IP3). Plays an important role in the regulation of intracellular signaling cascades. Becomes activated in response to ligand-mediated activation of receptor-type tyrosine kinases, such as PDGFRA, PDGFRB, FGFR1, FGFR2, FGFR3 and FGFR4. Plays a role in actin reorganization and cell migration.

Molecular Weight: 148532

UniProt: [P19174](#)

Pathways: [RTK Signaling](#), [WNT Signaling](#), [TCR Signaling](#), [Fc-epsilon Receptor Signaling Pathway](#), [EGFR Signaling Pathway](#), [Neurotrophin Signaling Pathway](#), [Thyroid Hormone Synthesis](#), [Inositol Metabolic Process](#), [Myometrial Relaxation and Contraction](#), [Regulation of Muscle Cell Differentiation](#), [Regulation of G-Protein Coupled Receptor Protein Signaling](#), [Skeletal Muscle Fiber Development](#), [G-protein mediated Events](#), [Signaling Events mediated by VEGFR1 and VEGFR2](#), [Interaction of EGFR with phospholipase C-gamma](#), [VEGFR1 Specific Signals](#), [VEGF Signaling](#)

Application Details

Application Notes: WB: 1:2000. WB: 1:2000

Restrictions: For Research Use only

Handling

Format: Liquid

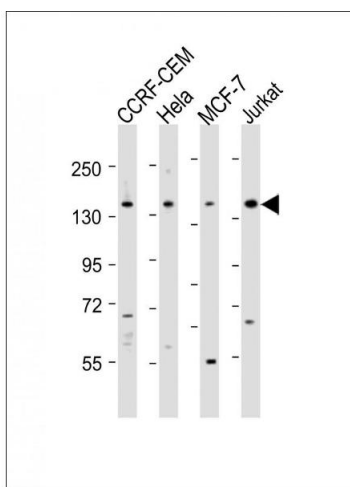
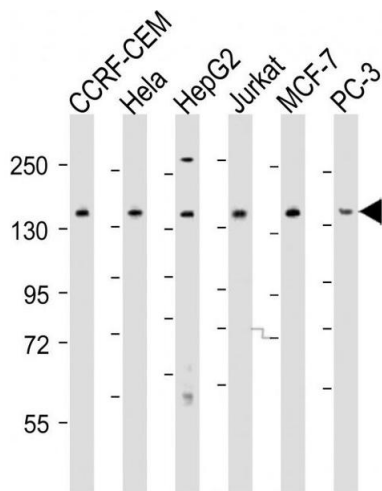
Buffer: Purified polyclonal antibody supplied in PBS with 0.09 % (W/V) sodium azide.

Preservative: Sodium azide

Precaution of Use: This product contains Sodium azide: a POISONOUS AND HAZARDOUS SUBSTANCE which should be handled by trained staff only.

Storage: 4 °C,-20 °C

Expiry Date: 6 months



Western Blotting

Image 1. All lanes : Anti-PLCG1 Antibody (Center) at 1:2000 dilution Lane 1: CCRF-CEM whole cell lysates Lane 2: HeLa whole cell lysates Lane 3: HepG2 whole cell lysates Lane 4: Jurkat whole cell lysates Lane 5: MCF-7 whole cell lysates Lane 6: PC-3 whole cell lysates Lysates/proteins at 20 µg per lane. Secondary Goat Anti-Rabbit IgG, (H+L), Peroxidase conjugated at 1/10000 dilution Predicted band size : 149 kDa Blocking/Dilution buffer: 5 % NFDN/TBST.

Western Blotting

Image 2. All lanes : Anti-PLCG1 Antibody (Center) at 1:2000 dilution Lane 1: CCRF-CEM whole cell lysates Lane 2: HeLa whole cell lysates Lane 3: MCF-7 whole cell lysates Lane 4: Jurkat whole cell lysates Lysates/proteins at 20 µg per lane. Secondary Goat Anti-Rabbit IgG, (H+L), Peroxidase conjugated at 1/10000 dilution Predicted band size : 149 kDa Blocking/Dilution buffer: 5 % NFDN/TBST.