



Datasheet for ABIN6244040  
**anti-MGEA5 antibody (AA 236-269)**



[Go to Product page](#)

4 Images

Overview

Quantity:	200 µL
Target:	MGEA5
Binding Specificity:	AA 236-269
Reactivity:	Human
Host:	Rabbit
Clonality:	Polyclonal
Conjugate:	This MGEA5 antibody is un-conjugated
Application:	Western Blotting (WB), Immunohistochemistry (Paraffin-embedded Sections) (IHC (p)), Flow Cytometry (FACS)

Product Details

Immunogen:	This MGEA5 antibody is generated from a rabbit immunized with a KLH conjugated synthetic peptide between 236-269 amino acids from the human region of human MGEA5.
Clone:	RB57955
Isotype:	Ig Fraction
Predicted Reactivity:	M, Rat
Purification:	This antibody is purified through a protein A column, followed by peptide affinity purification.

Target Details

Target:	MGEA5
---------	-------

## Target Details

---

Alternative Name: MGEA5 ([MGEA5 Products](#))

---

Background: Isoform 1: Cleaves GlcNAc but not GalNAc from O- glycosylated proteins. Can use p-nitrophenyl-beta-GlcNAc and 4- methylumbelliferone-GlcNAc as substrates but not p-nitrophenyl- beta-GalNAc or p-nitrophenyl-alpha-GlcNAc (in vitro) (PubMed:< a href="http://www.uniprot.org/citations/11148210" target="\_blank">11148210). Does not bind acetyl-CoA and does not have histone acetyltransferase activity (PubMed:< a href="http://www.uniprot.org/citations/24088714" target="\_blank">24088714).

---

Molecular Weight: 102915

---

UniProt: [O60502](#)

---

Pathways: [Positive Regulation of Peptide Hormone Secretion, Regulation of Carbohydrate Metabolic Process](#)

---

## Application Details

---

Application Notes: WB: 1:2000. IHC-P: 1:25. IHC-P: 1:25. FC: 1:25

---

Restrictions: For Research Use only

---

## Handling

---

Format: Liquid

---

Buffer: Purified polyclonal antibody supplied in PBS with 0.09 % (W/V) sodium azide.

---

Preservative: Sodium azide

---

Precaution of Use: This product contains Sodium azide: a POISONOUS AND HAZARDOUS SUBSTANCE which should be handled by trained staff only.

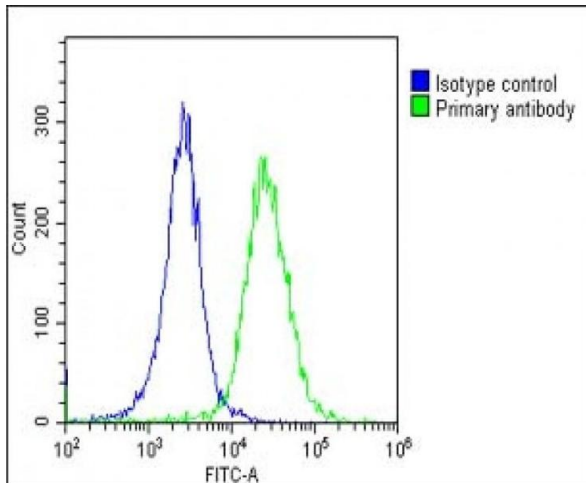
---

Storage: 4 °C,-20 °C

---

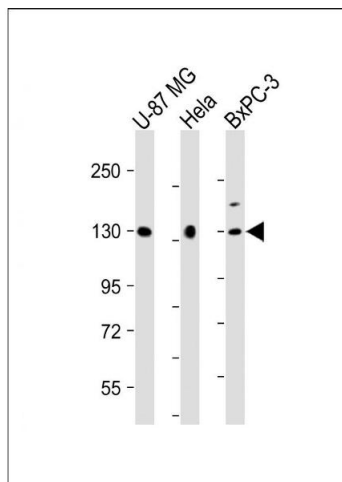
Expiry Date: 6 months

---



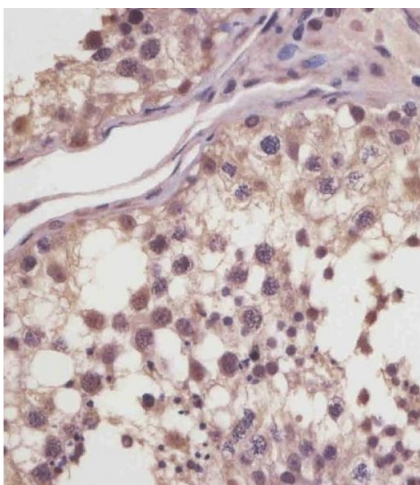
### Flow Cytometry

**Image 1.** Overlay histogram showing HeLa cells stained with (ABIN6244040 and ABIN6578881)(green line). The cells were fixed with 2 % paraformaldehyde (10 min) and then permeabilized with 90 % methanol for 10 min. The cells were then incubated in 2 % bovine serum albumin to block non-specific protein-protein interactions followed by the antibody ((ABIN6244040 and ABIN6578881), 1:25 dilution) for 60 min at 37 °C. The secondary antibody used was Goat Anti-Rabbit IgG, DyLight® 488 Conjugated Highly Cross-Adsorbed(OE188374) at 1/200 dilution for 40 min at 37 °C. Isotype control antibody (blue line) was rabbit IgG1 (1  $\mu$ g/ $1 \times 10^6$  cells) used under the same conditions. Acquisition of >10,000 events was performed.



### Western Blotting

**Image 2.** All lanes : Anti-MGEA5 Antibody (N-Term) at 1:2000 dilution Lane 1: U-87 MG whole cell lysate Lane 2: HeLa whole cell lysate Lane 3: BxPC-3 whole cell lysate Lysates/proteins at 20  $\mu$ g per lane. Secondary Goat Anti-Rabbit IgG, (H+L), Peroxidase conjugated at 1/10000 dilution. Predicted band size : 103 kDa Blocking/Dilution buffer: 5 % NFDM/TBST.



### Immunohistochemistry (Paraffin-embedded Sections)

**Image 3.** (ABIN6244040 and ABIN6578881) staining MGEA5 in human testis tissue sections by Immunohistochemistry (IHC-P - paraformaldehyde-fixed, paraffin-embedded sections). Tissue was fixed with formaldehyde and blocked with 3 % BSA for 0.5 hour at room temperature, antigen retrieval was by heat mediation with a citrate buffer (pH 6). Samples were incubated with primary antibody (1/25) for 1 hour at 37 °C. A undiluted biotinylated goat polyvalent antibody was used as the

secondary antibody.

Please check the [product details page](#) for more images. Overall 4 images are available for ABIN6244040.