



[Go to Product page](#)

Datasheet for ABIN6244055  
**anti-PRB2 antibody (C-Term)**

4 Images

1 Publication

### Overview

Quantity:	400 µL
Target:	PRB2
Binding Specificity:	AA 388-416, C-Term
Reactivity:	Human, Mouse
Host:	Rabbit
Clonality:	Polyclonal
Conjugate:	This PRB2 antibody is un-conjugated
Application:	Flow Cytometry (FACS), Immunohistochemistry (Paraffin-embedded Sections) (IHC (p)), Western Blotting (WB)

### Product Details

Immunogen:	This PRB2 antibody is generated from rabbits immunized with a KLH conjugated synthetic peptide between 388-416 amino acids from the C-terminal region of human PRB2.
Clone:	RB26910
Isotype:	Ig Fraction
Purification:	This antibody is purified through a protein A column, followed by peptide affinity purification.

### Target Details

Target:	PRB2
Alternative Name:	PRB2 ( <a href="#">PRB2 Products</a> )

## Target Details

---

Background: The function of PRB2 remains unknown.

Molecular Weight: 40799

UniProt: [P02812](#)

## Application Details

---

Application Notes: WB: 1:1000. WB: 1:1000. IHC-P: 1:50~100. FC: 1:10~50

Restrictions: For Research Use only

## Handling

---

Format: Liquid

Buffer: Purified polyclonal antibody supplied in PBS with 0.09 % (W/V) sodium azide.

Preservative: Sodium azide

Precaution of Use: This product contains Sodium azide: a POISONOUS AND HAZARDOUS SUBSTANCE which should be handled by trained staff only.

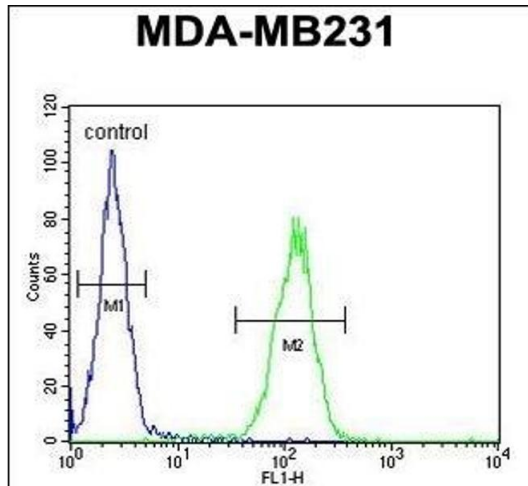
Storage: 4 °C,-20 °C

Expiry Date: 6 months

## Publications

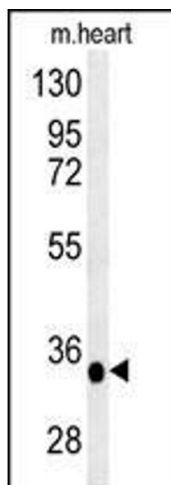
---

Product cited in: Igoh, Tomotake, Doi: "Detection of proline-rich proteins for the identification of saliva by enzyme-linked immunosorbent assay." in: **Legal medicine (Tokyo, Japan)**, Vol. 17, Issue 3, pp. 210-3, (2016) ([PubMed](#)).



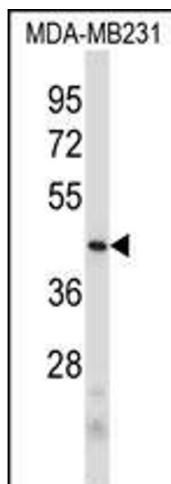
### Flow Cytometry

**Image 1.** PRB2 Antibody (C-term) (ABIN6244055 and ABIN6578967) flow cytometric analysis of MDA-M cells (right histogram) compared to a negative control cell (left histogram). FITC-conjugated goat-anti-rabbit secondary antibodies were used for the analysis.



### Western Blotting

**Image 2.** PRB2 Antibody (C-term) (ABIN6244055 and ABIN6578967) western blot analysis in mouse heart tissue lysates (35 µg/lane). This demonstrates the PRB2 antibody detected PRB2 protein (arrow).



### Western Blotting

**Image 3.** PRB2 Antibody (C-term) (ABIN6244055 and ABIN6578967) western blot analysis in MDA-M cell line lysates (35 µg/lane). This demonstrates the PRB2 antibody detected the PRB2 protein (arrow).

Please check the [product details page](#) for more images. Overall 4 images are available for ABIN6244055.