

Datasheet for ABIN6244064

**anti-GDE1 antibody****1** Image[Go to Product page](#)

## Overview

Quantity:	200 µL
Target:	GDE1
Reactivity:	Human
Host:	Mouse
Clonality:	Monoclonal
Conjugate:	This GDE1 antibody is un-conjugated
Application:	Western Blotting (WB)

## Product Details

Immunogen:	This GDE1 antibody is generated from a mouse immunized with a recombinant protein from the human region of human GDE1.
Clone:	2021CT823-61-7
Isotype:	IgG1 kappa
Predicted Reactivity:	H
Purification:	This antibody is purified through a protein G column, followed by dialysis against PBS.

## Target Details

Target:	GDE1
Alternative Name:	GDE1 ( <a href="#">GDE1 Products</a> )
Background:	Has glycerophosphoinositol phosphodiesterase activity. Has little or no activity towards

## Target Details

	glycerophosphocholine. GDE1 activity can be modulated by G-protein signaling pathways (By similarity).
Molecular Weight:	37718
UniProt:	<a href="#">Q9NZC3</a>

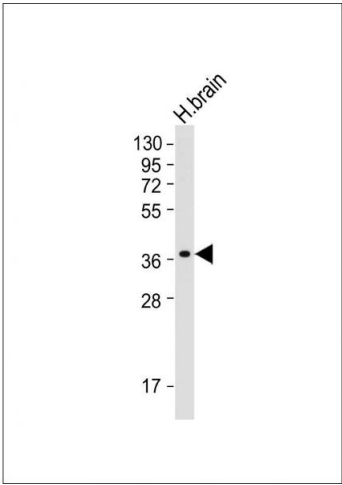
## Application Details

Application Notes:	WB: 1:2000
Restrictions:	For Research Use only

## Handling

Format:	Liquid
Buffer:	Purified monoclonal antibody supplied in PBS with 0.09 % (W/V) sodium azide.
Preservative:	Sodium azide
Precaution of Use:	This product contains Sodium azide: a POISONOUS AND HAZARDOUS SUBSTANCE which should be handled by trained staff only.
Storage:	4 °C,-20 °C
Expiry Date:	6 months

## Images



### Western Blotting

**Image 1.** Anti-GDE1 Antibody at 1:2000 dilution + human brain tissue lysate Lysates/proteins at 20 µg per lane. Secondary Goat Anti-mouse IgG, (H+L), Peroxidase conjugated at 1/10000 dilution. Predicted band size : 38 kDa Blocking/Dilution buffer: 5 % NFDM/TBST.