

Datasheet for ABIN6244065
anti-KDM1B antibody (N-Term)[Go to Product page](#)

1 Image

Overview

Quantity:	400 µL
Target:	KDM1B
Binding Specificity:	AA 38-73, N-Term
Reactivity:	Human
Host:	Rabbit
Clonality:	Polyclonal
Conjugate:	This KDM1B antibody is un-conjugated
Application:	Western Blotting (WB)

Product Details

Immunogen:	This KDM1B antibody is generated from a rabbit immunized with a KLH conjugated synthetic peptide between 38-73 amino acids from the N-terminal region of human KDM1B.
Clone:	RB49895
Isotype:	Ig Fraction
Purification:	This antibody is purified through a protein A column, followed by peptide affinity purification.

Target Details

Target:	KDM1B
Alternative Name:	KDM1B (KDM1B Products)
Background:	Histone demethylase that demethylates 'Lys-4' of histone H3, a specific tag for epigenetic

Target Details

transcriptional activation, thereby acting as a corepressor. Required for de novo DNA methylation of a subset of imprinted genes during oogenesis. Acts by oxidizing the substrate by FAD to generate the corresponding imine that is subsequently hydrolyzed. Demethylates both mono- and di-methylated 'Lys-4' of histone H3. Has no effect on tri- methylated 'Lys-4', mono-, di- or tri-methylated 'Lys-9', mono-, di- or tri-methylated 'Lys-27', mono-, di- or tri-methylated 'Lys-36' of histone H3, or on mono-, di- or tri-methylated 'Lys-20' of histone H4 (By similarity).

Molecular Weight: 92098

UniProt: [Q8NB78](#)

Pathways: [Warburg Effect](#)

Application Details

Application Notes: WB: 1:1000

Restrictions: For Research Use only

Handling

Format: Liquid

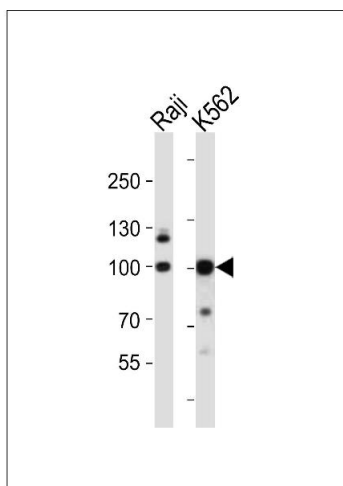
Buffer: Purified polyclonal antibody supplied in PBS with 0.09 % (W/V) sodium azide.

Preservative: Sodium azide

Precaution of Use: This product contains Sodium azide: a POISONOUS AND HAZARDOUS SUBSTANCE which should be handled by trained staff only.

Storage: 4 °C,-20 °C

Expiry Date: 6 months



Western Blotting

Image 1. Western blot analysis of lysates from Raji, K562 cell line (from left to right), using KDM1B Antibody (N-term) (ABIN6244065 and ABIN6577788). (ABIN6244065 and ABIN6577788) was diluted at 1:1000 at each lane. A goat anti-rabbit IgG H&L(HRP) at 1:10000 dilution was used as the secondary antibody. Lysates at 20 µg per lane.