



[Go to Product page](#)

Datasheet for ABIN6244068
anti-SV2C antibody (C-Term)

1 Image

Overview

| | |
|----------------------|-------------------------------------|
| Quantity: | 400 µL |
| Target: | SV2C |
| Binding Specificity: | AA 547-580, C-Term |
| Reactivity: | Rat |
| Host: | Rabbit |
| Clonality: | Polyclonal |
| Conjugate: | This SV2C antibody is un-conjugated |
| Application: | Western Blotting (WB) |

Product Details

| | |
|---------------|---|
| Immunogen: | This SV2C antibody is generated from a rabbit immunized with a KLH conjugated synthetic peptide between 547-580 amino acids from the C-terminal region of human SV2C. |
| Clone: | RB43556 |
| Isotype: | Ig Fraction |
| Purification: | This antibody is purified through a protein A column, followed by peptide affinity purification. |

Target Details

| | |
|-------------------|---|
| Target: | SV2C |
| Alternative Name: | SV2C (SV2C Products) |
| Background: | Plays a role in the control of regulated secretion in neural and endocrine cells, enhancing |

Target Details

selectively low-frequency neurotransmission. Positively regulates vesicle fusion by maintaining the readily releasable pool of secretory vesicles (By similarity).

Molecular Weight: 82342

UniProt: [Q496J9](#)

Application Details

Application Notes: WB: 1:1000

Restrictions: For Research Use only

Handling

Format: Liquid

Buffer: Purified polyclonal antibody supplied in PBS with 0.09 % (W/V) sodium azide.

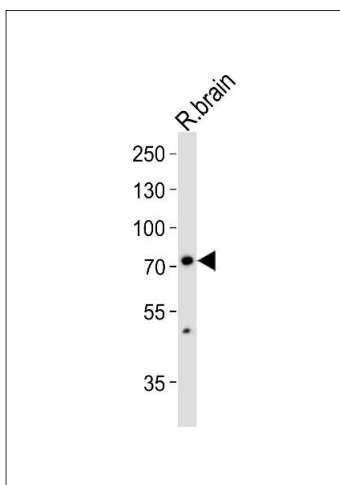
Preservative: Sodium azide

Precaution of Use: This product contains Sodium azide: a POISONOUS AND HAZARDOUS SUBSTANCE which should be handled by trained staff only.

Storage: 4 °C,-20 °C

Expiry Date: 6 months

Images



Western Blotting

Image 1. Western blot analysis of lysate from rat brain tissue lysate, using SV2C Antibody (C-term) (ABIN6244068 and ABIN6577595). (ABIN6244068 and ABIN6577595) was diluted at 1:1000. A goat anti-rabbit IgG H&L(HRP) at 1:10000 dilution was used as the secondary antibody. Lysate at 35 µg.