



[Go to Product page](#)

Datasheet for ABIN6244073  
**anti-RPS10 antibody (AA 96-129)**

3 Images

### Overview

Quantity:	200 µL
Target:	RPS10
Binding Specificity:	AA 96-129
Reactivity:	Human, Mouse, Rat
Host:	Rabbit
Clonality:	Polyclonal
Conjugate:	This RPS10 antibody is un-conjugated
Application:	Western Blotting (WB), Immunofluorescence (IF), Flow Cytometry (FACS)

### Product Details

Immunogen:	This RPS10 antibody is generated from a rabbit immunized with a KLH conjugated synthetic peptide between 96-129 amino acids from human RPS10.
Clone:	RB55395
Isotype:	Ig Fraction
Predicted Reactivity:	B
Purification:	This antibody is purified through a protein A column, followed by peptide affinity purification.

### Target Details

Target:	RPS10
Alternative Name:	RPS10 ( <a href="#">RPS10 Products</a> )

## Target Details

Background:	Component of the 40S ribosomal subunit.
Molecular Weight:	18898
UniProt:	<a href="#">P46783</a>
Pathways:	<a href="#">Ribonucleoprotein Complex Subunit Organization</a> , <a href="#">Ribosome Assembly</a>

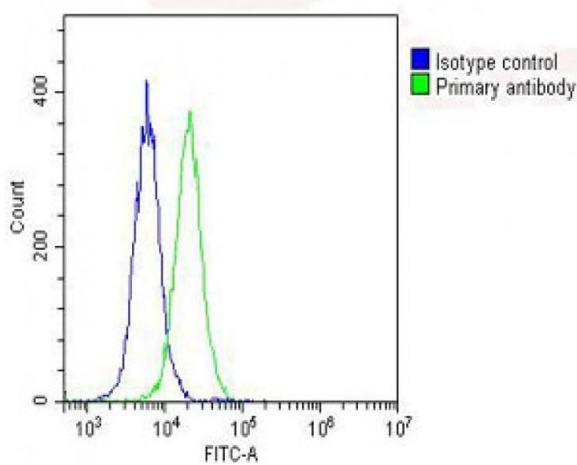
## Application Details

Application Notes:	IF: 1:25. WB: 1:2000. FC: 1:25
Restrictions:	For Research Use only

## Handling

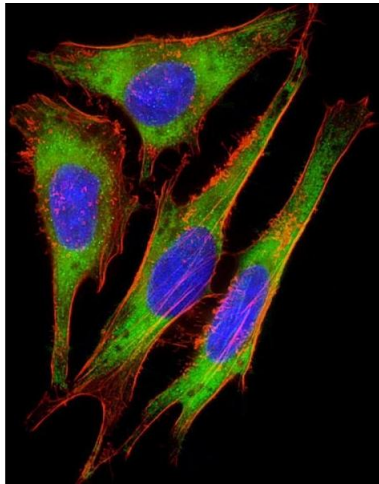
Format:	Liquid
Buffer:	Purified polyclonal antibody supplied in PBS with 0.09 % (W/V) sodium azide.
Preservative:	Sodium azide
Precaution of Use:	This product contains Sodium azide: a POISONOUS AND HAZARDOUS SUBSTANCE which should be handled by trained staff only.
Storage:	4 °C, -20 °C
Expiry Date:	6 months

## Images



### Flow Cytometry

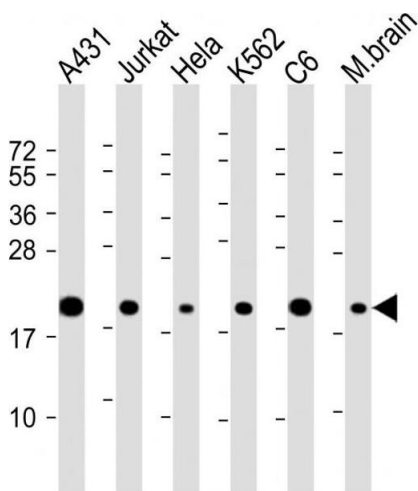
**Image 1.** Overlay histogram showing HeLa cells stained with (ABIN6244073 and ABIN6578602) (green line). The cells were fixed with 2 % paraformaldehyde (10 min) and then permeabilized with 90 % methanol for 10 min. The cells were then incubated in 2 % bovine serum albumin to block non-specific protein-protein interactions followed by the antibody ((ABIN6244073 and ABIN6578602), 1:25 dilution) for 60 min at 37 °C. The secondary antibody used was Goat-Anti-Rabbit IgG, DyLight® 488 Conjugated Highly Cross-Adsorbed(OH191631) at 1/200 dilution for 40 min at 37 °C.



Isotype control antibody (blue line) was rabbit IgG (1  $\mu$ g/ $1 \times 10^6$  cells) used under the same conditions. Acquisition of  $>10,000$  events was performed.

### Immunofluorescence

**Image 2.** Immunofluorescent analysis of 4% paraformaldehyde-fixed, 0.1% Triton X-100 permeabilized HeLa (human cervical epithelial adenocarcinoma cell line) cells labeling RPS10 with (ABIN6244073 and ABIN6578602) at 1/25 dilution, followed by Dylight® 488-conjugated goat anti-rabbit IgG (NK179883) secondary antibody at 1/200 dilution (green). Immunofluorescence image showing cytoplasm staining on HeLa cell line. Cytoplasmic actin is detected with Dylight® 554 Phalloidin (PD18466410) at 1/100 dilution (red). The nuclear counter stain is DI (blue).



### Western Blotting

**Image 3.** All lanes : Anti-RPS10 Antibody (C-Term) at 1:2000 dilution Lane 1: A431 whole cell lysate Lane 2: Jurkat whole cell lysate Lane 3: HeLa whole cell lysate Lane 4: K562 whole cell lysate Lane 5: C6 whole cell lysate Lane 6: mouse brain lysate Lysates/proteins at 20  $\mu$ g per lane. Secondary Goat Anti-Rabbit IgG, (H+L), Peroxidase conjugated at 1/10000 dilution. Predicted band size : 19 kDa Blocking/Dilution buffer: 5% NFDN/TBST.