

Datasheet for ABIN6244076  
**anti-RASSF2 antibody (AA 1-326)**[Go to Product page](#)

## 2 Images

## Overview

Quantity:	200 µL
Target:	RASSF2
Binding Specificity:	AA 1-326
Reactivity:	Human
Host:	Mouse
Clonality:	Monoclonal
Conjugate:	This RASSF2 antibody is un-conjugated
Application:	Western Blotting (WB), Flow Cytometry (FACS)

## Product Details

Immunogen:	This RASSF2 antibody is generated from a mouse immunized with a recombinant protein between 1-326 amino acids from human RASSF2.
Clone:	1509CT269-10-9-29
Isotype:	IgG2a kappa
Purification:	This antibody is purified through a protein G column, followed by dialysis against PBS.

## Target Details

Target:	RASSF2
Alternative Name:	RASSF2 ( <a href="#">RASSF2 Products</a> )
Background:	Potential tumor suppressor. Acts as a KRAS-specific effector protein. May promote apoptosis

## Target Details

and cell cycle arrest. Stabilizes STK3/MST2 by protecting it from proteasomal degradation.

Molecular Weight: 37790

UniProt: [P50749](#)

## Application Details

Application Notes: WB: 1:2000. FC: 1:25

Restrictions: For Research Use only

## Handling

Format: Liquid

Buffer: Purified monoclonal antibody supplied in PBS with 0.09 % (W/V) sodium azide.

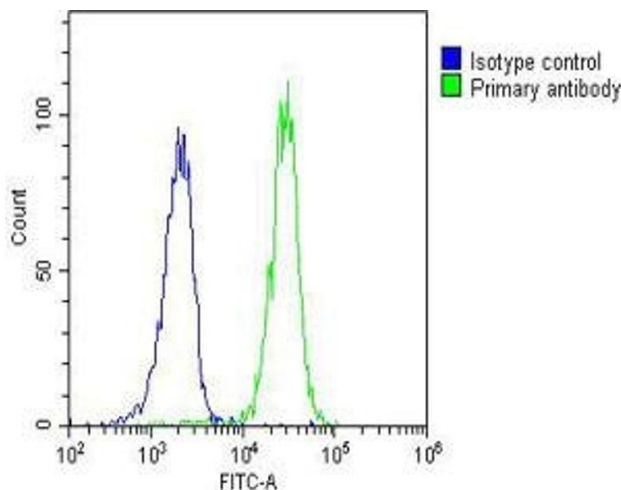
Preservative: Sodium azide

Precaution of Use: This product contains Sodium azide: a POISONOUS AND HAZARDOUS SUBSTANCE which should be handled by trained staff only.

Storage: 4 °C,-20 °C

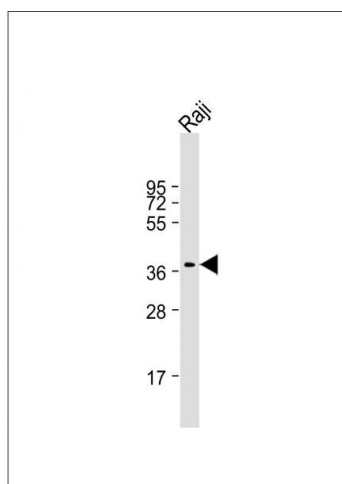
Expiry Date: 6 months

## Images



### Flow Cytometry

**Image 1.** Overlay histogram showing Raji cells stained with (ABIN6244076 and ABIN6577160)(green line). The cells were fixed with 2 % paraformaldehyde (10 min) and then permeabilized with 90 % methanol for 10 min. The cells were then incubated in 2 % bovine serum albumin to block non-specific protein-protein interactions followed by the antibody ((ABIN6244076 and ABIN6577160), 1:25 dilution) for 60 min at 37 °C. The secondary antibody used was Goat-Anti-Mouse IgG, DyLight® 488 Conjugated Highly Cross-Adsorbed(OJ192088) at 1/200 dilution for 40 min at 37 °C. Isotype control antibody (blue line) was mouse IgG2a (1 µg/1x10<sup>6</sup> cells) used under the same conditions. Acquisition



of >10,000 events was performed.

### Western Blotting

**Image 2.** Anti-RASSF2 Antibody at 1:2000 dilution + Raji whole cell lysate Lysates/proteins at 20 µg per lane. Secondary Goat Anti-mouse IgG, (H+L), Peroxidase conjugated at 1/10000 dilution. Predicted band size : 38 kDa Blocking/Dilution buffer: 5 % NFDM/TBST.