

Datasheet for ABIN6244079  
**anti-TOMM40L antibody (N-Term)**[Go to Product page](#)

## 1 Image

## Overview

|                      |  |
|----------------------|--|
| Quantity:            | 400 µL                                 |
| Target:              | TOMM40L                                |
| Binding Specificity: | AA 25-58, N-Term                       |
| Reactivity:          | Rat                                    |
| Host:                | Rabbit                                 |
| Clonality:           | Polyclonal                             |
| Conjugate:           | This TOMM40L antibody is un-conjugated |
| Application:         | Western Blotting (WB)                  |

## Product Details

|                       |   |
|-----------------------|---|
| Immunogen:            | This TOMM40L antibody is generated from a rabbit immunized with a KLH conjugated synthetic peptide between 25-58 amino acids from the N-terminal region of human TOMM40L. |
| Clone:                | RB50132   |
| Isotype:              | Ig Fraction   |
| Predicted Reactivity: | B, M  |
| Purification:         | This antibody is purified through a protein A column, followed by peptide affinity purification.  |

## Target Details

|                   |  |
|-------------------|--|
| Target:           | TOMM40L                                      |
| Alternative Name: | TOMM40L ( <a href="#">TOMM40L Products</a> ) |

## Target Details

Background: Potential channel-forming protein implicated in import of protein precursors into mitochondria (By similarity).

Molecular Weight: 33917

UniProt: [Q969M1](#)

## Application Details

Application Notes: WB: 1:1000

Restrictions: For Research Use only

## Handling

Format: Liquid

Buffer: Purified polyclonal antibody supplied in PBS with 0.09 % (W/V) sodium azide.

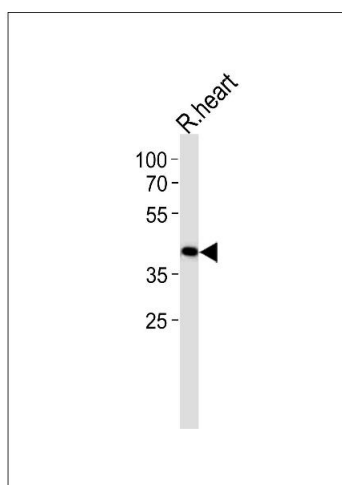
Preservative: Sodium azide

Precaution of Use: This product contains Sodium azide: a POISONOUS AND HAZARDOUS SUBSTANCE which should be handled by trained staff only.

Storage: 4 °C,-20 °C

Expiry Date: 6 months

## Images



### Western Blotting

**Image 1.** Western blot analysis of lysate from rat heart tissue lysate, using TOL Antibody (N-term) (ABIN6244079 and ABIN6577572). (ABIN6244079 and ABIN6577572) was diluted at 1:1000. A goat anti-rabbit IgG H&L(HRP) at 1:10000 dilution was used as the secondary antibody. Lysate at 35 µg.