



[Go to Product page](#)

Datasheet for ABIN6244091

anti-MT-ND1 antibody (N-Term)

1 Image

Overview

Quantity:	400 µL
Target:	MT-ND1
Binding Specificity:	AA 34-68, N-Term
Reactivity:	Human
Host:	Rabbit
Clonality:	Polyclonal
Conjugate:	This MT-ND1 antibody is un-conjugated
Application:	Western Blotting (WB)

Product Details

Immunogen:	This MT-ND1 antibody is generated from a rabbit immunized with a KLH conjugated synthetic peptide between 34-68 amino acids from the N-terminal region of human MT-ND1.
Clone:	RB50705
Isotype:	Ig Fraction
Predicted Reactivity:	B, Pig, Sh
Purification:	This antibody is purified through a protein A column, followed by peptide affinity purification.

Target Details

Target:	MT-ND1
Alternative Name:	MT-ND1 (MT-ND1 Products)

Target Details

Background: Core subunit of the mitochondrial membrane respiratory chain NADH dehydrogenase (Complex I) that is believed to belong to the minimal assembly required for catalysis. Complex I functions in the transfer of electrons from NADH to the respiratory chain. The immediate electron acceptor for the enzyme is believed to be ubiquinone (By similarity).

Molecular Weight: 35661

UniProt: [P03886](#)

Application Details

Application Notes: WB: 1:1000

Restrictions: For Research Use only

Handling

Format: Liquid

Buffer: Purified polyclonal antibody supplied in PBS with 0.09 % (W/V) sodium azide.

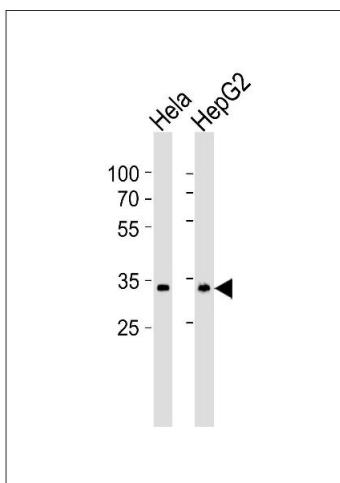
Preservative: Sodium azide

Precaution of Use: This product contains Sodium azide: a POISONOUS AND HAZARDOUS SUBSTANCE which should be handled by trained staff only.

Storage: 4 °C,-20 °C

Expiry Date: 6 months

Images



Western Blotting

Image 1. Western blot analysis of lysates from HeLa, HepG2 cell line (from left to right), using MT-ND1 Antibody (N-term) (ABIN6244091 and ABIN6577525). (ABIN6244091 and ABIN6577525) was diluted at 1:1000 at each lane. A goat anti-rabbit IgG H&L(HRP) at 1:5000 dilution was used as the secondary antibody. Lysates at 35 µg per lane.