

Datasheet for ABIN6244115
anti-NUPL1 antibody (AA 206-240)



[Go to Product page](#)

1 Image

Overview

Quantity:	200 µL
Target:	NUPL1
Binding Specificity:	AA 206-240
Reactivity:	Human
Host:	Rabbit
Clonality:	Polyclonal
Conjugate:	This NUPL1 antibody is un-conjugated
Application:	Western Blotting (WB)

Product Details

Immunogen:	This NUPL1 antibody is generated from a rabbit immunized with a KLH conjugated synthetic peptide between 206-240 amino acids from the Central region of human NUPL1.
Clone:	RB55908
Isotype:	Ig Fraction
Predicted Reactivity:	M, Rat
Purification:	This antibody is purified through a protein A column, followed by peptide affinity purification.

Target Details

Target:	NUPL1
Alternative Name:	NUPL1 (NUPL1 Products)

Target Details

Background:	Component of the nuclear pore complex, a complex required for the trafficking across the nuclear membrane.
Molecular Weight:	60897
UniProt:	Q9BVL2
Pathways:	SARS-CoV-2 Protein Interactome

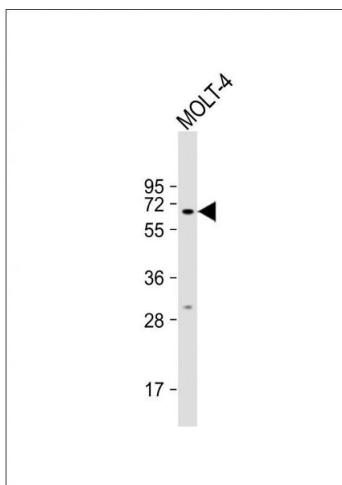
Application Details

Application Notes:	WB: 1:2000
Restrictions:	For Research Use only

Handling

Format:	Liquid
Buffer:	Purified polyclonal antibody supplied in PBS with 0.09 % (W/V) sodium azide.
Preservative:	Sodium azide
Precaution of Use:	This product contains Sodium azide: a POISONOUS AND HAZARDOUS SUBSTANCE which should be handled by trained staff only.
Storage:	4 °C,-20 °C
Expiry Date:	6 months

Images



Western Blotting

Image 1. Anti-NUPL1 Antibody (Center) at 1:2000 dilution + MOLT-4 whole cell lysate Lysates/proteins at 20 µg per lane. Secondary Goat Anti-Rabbit IgG, (H+L), Peroxidase conjugated at 1/10000 dilution. Predicted band size : 61 kDa
Blocking/Dilution buffer: 5 % NFDM/TBST.