

Datasheet for ABIN6244122  
**anti-TSPY2 antibody (AA 86-120)**[Go to Product page](#)

## 1 Image

## Overview

Quantity:	400 µL
Target:	TSPY2
Binding Specificity:	AA 86-120
Reactivity:	Human
Host:	Rabbit
Clonality:	Polyclonal
Conjugate:	This TSPY2 antibody is un-conjugated
Application:	Western Blotting (WB)

## Product Details

Immunogen:	This TSPY2 antibody is generated from a rabbit immunized with a KLH conjugated synthetic peptide between 86-120 amino acids from the Central region of human TSPY2.
Clone:	RB49775
Isotype:	Ig Fraction
Purification:	This antibody is purified through a protein A column, followed by peptide affinity purification.

## Target Details

Target:	TSPY2
Alternative Name:	TSPY2 ( <a href="#">TSPY2 Products</a> )
Background:	Unknown. May be involved in sperm differentiation and proliferation (By similarity).

### Target Details

Molecular Weight:	35100
UniProt:	<a href="#">A6NKD2</a>

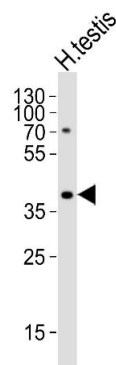
### Application Details

Application Notes:	WB: 1:1000
Restrictions:	For Research Use only

### Handling

Format:	Liquid
Buffer:	Purified polyclonal antibody supplied in PBS with 0.09 % (W/V) sodium azide.
Preservative:	Sodium azide
Precaution of Use:	This product contains Sodium azide: a POISONOUS AND HAZARDOUS SUBSTANCE which should be handled by trained staff only.
Storage:	4 °C, -20 °C
Expiry Date:	6 months

### Images



#### Western Blotting

**Image 1.** Western blot analysis of lysate from human testis tissue lysate, using TSPY2 Antibody (Center) (ABIN6244122 and ABIN6577495). (ABIN6244122 and ABIN6577495) was diluted at 1:1000. A goat anti-rabbit IgG H&L(HRP) at 1:5000 dilution was used as the secondary antibody. Lysate at 35  $\mu$ g.