

Datasheet for ABIN6244129  
**anti-CTAGE6 antibody (C-Term)**



[Go to Product page](#)

1 Image

### Overview

Quantity:	80 µL
Target:	CTAGE6
Binding Specificity:	AA 581-615, C-Term
Reactivity:	Human
Host:	Rabbit
Clonality:	Polyclonal
Conjugate:	This CTAGE6 antibody is un-conjugated
Application:	Western Blotting (WB)

### Product Details

Immunogen:	This CTAGE6P antibody is generated from a rabbit immunized with a KLH conjugated synthetic peptide between 581-615 amino acids from the C-terminal region of human CTAGE6P.
Clone:	RB49586
Isotype:	Ig Fraction
Purification:	This antibody is purified through a protein A column, followed by peptide affinity purification.

### Target Details

Target:	CTAGE6
Alternative Name:	CTAGE6P ( <a href="#">CTAGE6 Products</a> )
Molecular Weight:	87900

## Target Details

UniProt: [Q86UF2](#)

## Application Details

Application Notes: WB: 1:2000

Restrictions: For Research Use only

## Handling

Format: Liquid

Buffer: Purified polyclonal antibody supplied in PBS with 0.09 % (W/V) sodium azide.

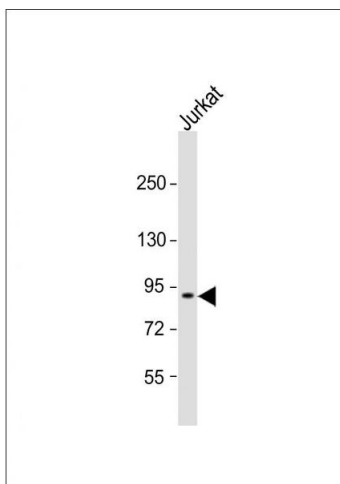
Preservative: Sodium azide

Precaution of Use: This product contains Sodium azide: a POISONOUS AND HAZARDOUS SUBSTANCE which should be handled by trained staff only.

Storage: 4 °C,-20 °C

Expiry Date: 6 months

## Images



### Western Blotting

**Image 1.** Anti-CTAGE6P Antibody (C-term) at 1:2000 dilution + Jurkat whole cell lysates Lysates/proteins at 20 µg per lane. Secondary Goat Anti-Rabbit IgG, (H+L), Peroxidase conjugated at 1/10000 dilution Predicted band size : 88 kDa Blocking/Dilution buffer: 5 % NFDM/TBST.