

Datasheet for ABIN6244139  
**anti-RLF antibody (AA 1751-1785)**[Go to Product page](#)

## 1 Image

## Overview

Quantity:	400 µL
Target:	RLF
Binding Specificity:	AA 1751-1785
Reactivity:	Human
Host:	Rabbit
Clonality:	Polyclonal
Conjugate:	This RLF antibody is un-conjugated
Application:	Western Blotting (WB)

## Product Details

Immunogen:	This RLF antibody is generated from a rabbit immunized with a KLH conjugated synthetic peptide between 1751-1785 amino acids from human RLF.
Clone:	RB53780
Isotype:	Ig Fraction
Purification:	This antibody is purified through a protein A column, followed by peptide affinity purification.

## Target Details

Target:	RLF
Alternative Name:	RLF ( <a href="#">RLF Products</a> )
Background:	May be involved in transcriptional regulation.

## Target Details

Molecular Weight: 217953

UniProt: [Q13129](#)

## Application Details

Application Notes: WB: 1:2000

Restrictions: For Research Use only

## Handling

Format: Liquid

Buffer: Purified polyclonal antibody supplied in PBS with 0.09 % (W/V) sodium azide.

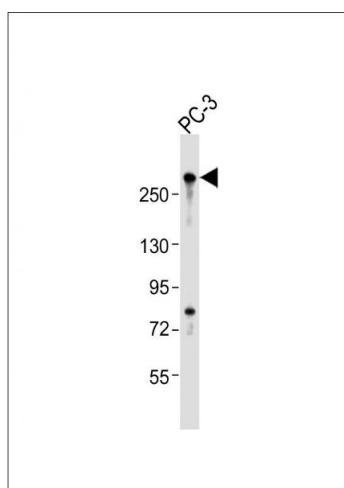
Preservative: Sodium azide

Precaution of Use: This product contains Sodium azide: a POISONOUS AND HAZARDOUS SUBSTANCE which should be handled by trained staff only.

Storage: 4 °C, -20 °C

Expiry Date: 6 months

## Images



### Western Blotting

**Image 1.** Anti-RLF Antibody (C-Term) at 1:2000 dilution + PC-3 whole cell lysates Lysates/proteins at 20 µg per lane. Secondary Goat Anti-Rabbit IgG, (H+L), Peroxidase conjugated at 1/10000 dilution Predicted band size : 218 kDa Blocking/Dilution buffer: 5 % NFDM/TBST.