

Datasheet for ABIN6244141  
**anti-TET1 antibody (C-Term)**[Go to Product page](#)

## 1 Image

## Overview

Quantity:	400 µL
Target:	TET1
Binding Specificity:	AA 1845-1879, C-Term
Reactivity:	Mouse
Host:	Rabbit
Clonality:	Polyclonal
Conjugate:	This TET1 antibody is un-conjugated
Application:	Western Blotting (WB)

## Product Details

Immunogen:	This mouse Tet1 antibody is generated from a rabbit immunized with a KLH conjugated synthetic peptide between 1845-1879 amino acids from the C-terminal region of mouse Tet1.
Clone:	RB52496
Isotype:	Ig Fraction
Purification:	This antibody is purified through a protein A column, followed by peptide affinity purification.

## Target Details

Target:	TET1
Alternative Name:	Tet1 ( <a href="#">TET1 Products</a> )
Molecular Weight:	219261

## Target Details

UniProt:	<a href="#">Q3URK3</a>
Pathways:	<a href="#">Stem Cell Maintenance</a> , <a href="#">Warburg Effect</a>

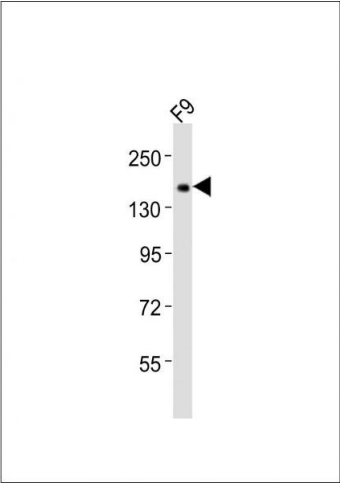
## Application Details

Application Notes:	WB: 1:2000
Restrictions:	For Research Use only

## Handling

Format:	Liquid
Buffer:	Purified polyclonal antibody supplied in PBS with 0.09 % (W/V) sodium azide.
Preservative:	Sodium azide
Precaution of Use:	This product contains Sodium azide: a POISONOUS AND HAZARDOUS SUBSTANCE which should be handled by trained staff only.
Storage:	4 °C,-20 °C
Expiry Date:	6 months

## Images



### Western Blotting

**Image 1.** Anti-Tet1 Antibody (C-term) at 1:2000 dilution + F9 whole cell lysates. Lysates/proteins at 20 µg per lane. Secondary Goat Anti-Rabbit IgG, (H+L), Peroxidase conjugated at 1/10000 dilution. Predicted band size : 219 kDa. Blocking/Dilution buffer: 5 % NFDM/TBST.