

Datasheet for ABIN6244143  
**anti-TMEM106B antibody (AA 218-252)**[Go to Product page](#)[2 Images](#)[1 Publication](#)

## Overview

Quantity:	200 µL
Target:	TMEM106B
Binding Specificity:	AA 218-252
Reactivity:	Human, Mouse
Host:	Rabbit
Clonality:	Polyclonal
Conjugate:	This TMEM106B antibody is un-conjugated
Application:	Western Blotting (WB), Flow Cytometry (FACS)

## Product Details

Immunogen:	This TMEM106B antibody is generated from a rabbit immunized with a KLH conjugated synthetic peptide between 218-252 amino acids from human TMEM106B.
Clone:	RB56763
Isotype:	Ig Fraction
Predicted Reactivity:	B, Rat
Purification:	This antibody is purified through a protein A column, followed by peptide affinity purification.

## Target Details

Target:	TMEM106B
Alternative Name:	TMEM106B ( <a href="#">TMEM106B Products</a> )

## Target Details

Background:	Involved in dendrite morphogenesis and maintenance by regulating lysosomal trafficking via its interaction with MAP6. May act by inhibiting retrograde transport of lysosomes along dendrites. Required for dendrite branching.
Molecular Weight:	31127
UniProt:	<a href="#">Q9NUM4</a>

## Application Details

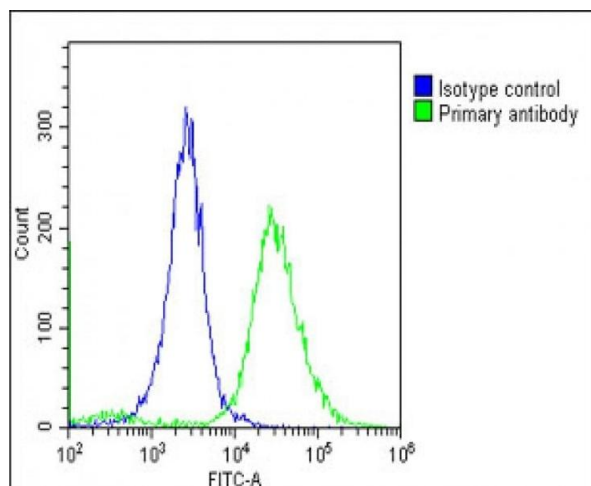
Application Notes:	WB: 1:2000. FC: 1:25
Restrictions:	For Research Use only

## Handling

Format:	Liquid
Buffer:	Purified polyclonal antibody supplied in PBS with 0.09 % (W/V) sodium azide.
Preservative:	Sodium azide
Precaution of Use:	This product contains Sodium azide: a POISONOUS AND HAZARDOUS SUBSTANCE which should be handled by trained staff only.
Storage:	4 °C, -20 °C
Expiry Date:	6 months

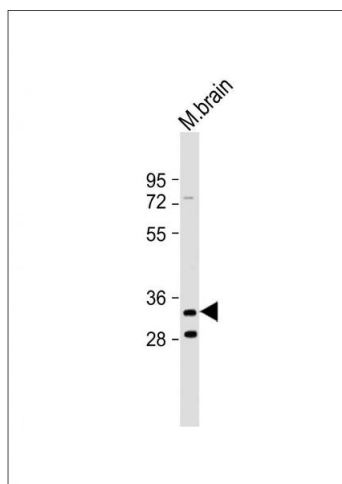
## Publications

Product cited in:	Jiang, Cao, Sawaya, Abskharon, Ge, DeTure, Dickson, Fu, Ogorzalek Loo, Loo, Eisenberg: "Amyloid fibrils in FTLD-TDP are composed of TMEM106B and not TDP-43." in: <b>Nature</b> , Vol. 605, Issue 7909, pp. 304-309, (2022) ( <a href="#">PubMed</a> ).
-------------------	---



### Flow Cytometry

**Image 1.** Overlay histogram showing HeLa cells stained with (ABIN6244143 and ABIN6578799)(green line). The cells were fixed with 2 % paraformaldehyde (10 min) and then permeabilized with 90 % methanol for 10 min. The cells were then incubated in 2 % bovine serum albumin to block non-specific protein-protein interactions followed by the antibody ((ABIN6244143 and ABIN6578799), 1:25 dilution) for 60 min at 37 °C. The secondary antibody used was Goat-Anti-Rabbit IgG, DyLight® 488 Conjugated Highly Cross-Adsorbed(OE188374) at 1/200 dilution for 40 min at 37 °C. Isotype control antibody (blue line) was rabbit IgG1 (1 µg/1x10<sup>6</sup> cells) used under the same conditions. Acquisition of >10,000 events was performed.



### Western Blotting

**Image 2.** Anti-TMEM106B Antibody (C-Term) at 1:2000 dilution + Mouse brain lysate Lysates/proteins at 20 µg per lane. Secondary Goat Anti-Rabbit IgG, (H+L), Peroxidase conjugated at 1/10000 dilution. Predicted band size : 31 kDa Blocking/Dilution buffer: 5 % NFDM/TBST.