

Datasheet for ABIN6244145
anti-SDAD1 antibody (C-Term)[Go to Product page](#)

1 Image

Overview

Quantity:	400 µL
Target:	SDAD1
Binding Specificity:	AA 596-629, C-Term
Reactivity:	Human, Mouse
Host:	Rabbit
Clonality:	Polyclonal
Conjugate:	This SDAD1 antibody is un-conjugated
Application:	Western Blotting (WB)

Product Details

Immunogen:	This SDAD1 antibody is generated from a rabbit immunized with a KLH conjugated synthetic peptide between 596-629 amino acids from the C-terminal region of human SDAD1.
Clone:	RB51517
Isotype:	Ig Fraction
Predicted Reactivity:	B, Zf, Rat
Purification:	This antibody is purified through a protein A column, followed by peptide affinity purification.

Target Details

Target:	SDAD1
Alternative Name:	SDAD1 (SDAD1 Products)

Target Details

Background:	Required for 60S pre-ribosomal subunits export to the cytoplasm (By similarity).
Molecular Weight:	79871
UniProt:	Q9NVU7

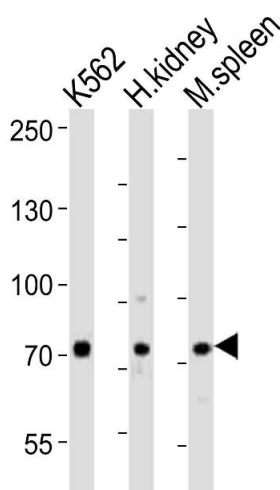
Application Details

Application Notes:	WB: 1:1000
Restrictions:	For Research Use only

Handling

Format:	Liquid
Buffer:	Purified polyclonal antibody supplied in PBS with 0.09 % (W/V) sodium azide.
Preservative:	Sodium azide
Precaution of Use:	This product contains Sodium azide: a POISONOUS AND HAZARDOUS SUBSTANCE which should be handled by trained staff only.
Storage:	4 °C,-20 °C
Expiry Date:	6 months

Images



Western Blotting

Image 1. Western blot analysis of lysates from K562 cell line, human kidney, mouse spleen tissue (from left to right), using SDAD1 Antibody (C-term) (ABIN6244145 and ABIN6577730). (ABIN6244145 and ABIN6577730) was diluted at 1:1000 at each lane. A goat anti-rabbit IgG H&L(HRP) at 1:10000 dilution was used as the secondary antibody. Lysates at 20 µg per lane.