

Datasheet for ABIN6244163

**anti-PPP2R2C antibody (AA 258-291)**[Go to Product page](#)**1** Image

## Overview

Quantity:	400 µL
Target:	PPP2R2C
Binding Specificity:	AA 258-291
Reactivity:	Human
Host:	Rabbit
Clonality:	Polyclonal
Conjugate:	This PPP2R2C antibody is un-conjugated
Application:	Western Blotting (WB)

## Product Details

Immunogen:	This PPP2R2C antibody is generated from a rabbit immunized with a KLH conjugated synthetic peptide between 258-291 amino acids from the Central region of human PPP2R2C.
Clone:	RB51484
Isotype:	Ig Fraction
Predicted Reactivity:	X, Pr, M, Rb, Rat
Purification:	This antibody is purified through a protein A column, followed by peptide affinity purification.

## Target Details

Target:	PPP2R2C
Alternative Name:	PPP2R2C ( <a href="#">PPP2R2C Products</a> )

## Target Details

Background:	The B regulatory subunit might modulate substrate selectivity and catalytic activity, and also might direct the localization of the catalytic enzyme to a particular subcellular compartment.
Molecular Weight:	51515
UniProt:	<a href="#">Q9Y2T4</a>
Pathways:	<a href="#">PI3K-Akt Signaling</a> , <a href="#">Hepatitis C</a>

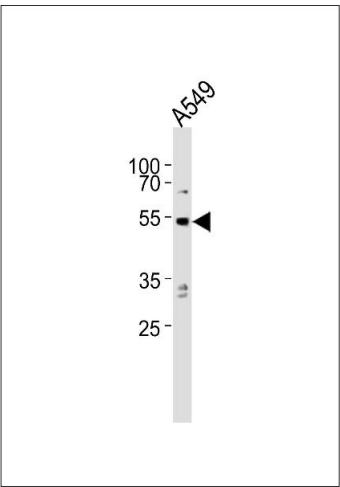
## Application Details

Application Notes:	WB: 1:1000
Restrictions:	For Research Use only

## Handling

Format:	Liquid
Buffer:	Purified polyclonal antibody supplied in PBS with 0.09 % (W/V) sodium azide.
Preservative:	Sodium azide
Precaution of Use:	This product contains Sodium azide: a POISONOUS AND HAZARDOUS SUBSTANCE which should be handled by trained staff only.
Storage:	4 °C, -20 °C
Expiry Date:	6 months

## Images



### Western Blotting

**Image 1.** Western blot analysis of lysate from A549 cell line, using P2R2C Antibody (Center) (ABIN6244163 and ABIN6577710). (ABIN6244163 and ABIN6577710) was diluted at 1:1000. A goat anti-rabbit IgG H&L(HRP) at 1:10000 dilution was used as the secondary antibody. Lysate at 20 µg.