



Datasheet for ABIN6244181

## anti-Methyltransferase Like 23 (METTL23) (AA 138-166), (C-Term) antibody



[Go to Product page](#)

1 Image

1 Publication

### Overview

Quantity:	400 µL
Target:	Methyltransferase Like 23 (METTL23)
Binding Specificity:	AA 138-166, C-Term
Reactivity:	Human
Host:	Rabbit
Clonality:	Polyclonal
Conjugate:	Un-conjugated
Application:	Western Blotting (WB)

### Product Details

Immunogen:	This C17orf95 antibody is generated from rabbits immunized with a KLH conjugated synthetic peptide between 138-166 amino acids from the C-terminal region of human C17orf95.
Clone:	RB33219
Isotype:	Ig Fraction
Predicted Reactivity:	M, Rat
Purification:	This antibody is purified through a protein A column, followed by peptide affinity purification.

### Target Details

Target:	Methyltransferase Like 23 (METTL23)
Alternative Name:	C17orf95 ( <a href="#">METTL23 Products</a> )

## Target Details

---

Background:	The specific function of the protein remains unknown.
Molecular Weight:	21469
NCBI Accession:	<a href="#">NP_001073979</a> , <a href="#">NP_001193912</a> , <a href="#">NP_001193913</a> , <a href="#">NP_001193914</a> , <a href="#">NP_001193915</a> , <a href="#">NP_001193916</a>
UniProt:	<a href="#">Q86XA0</a>

## Application Details

---

Application Notes:	WB: 1:1000
Restrictions:	For Research Use only

## Handling

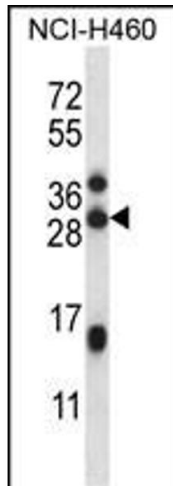
---

Format:	Liquid
Buffer:	Purified polyclonal antibody supplied in PBS with 0.09 % (W/V) sodium azide.
Preservative:	Sodium azide
Precaution of Use:	This product contains Sodium azide: a POISONOUS AND HAZARDOUS SUBSTANCE which should be handled by trained staff only.
Storage:	4 °C,-20 °C
Expiry Date:	6 months

## Publications

---

Product cited in:	Dong, Shinohara, Botilde, Nabeshima, Asai, Fukumoto, Hasegawa, Matsuo, Takeda, Shiratori, Nakamura, Hamada: "Pih1d3 is required for cytoplasmic preassembly of axonemal dynein in mouse sperm." in: <b>The Journal of cell biology</b> , Vol. 204, Issue 2, pp. 203-13, (2014) ( <a href="#">PubMed</a> ).
-------------------	--



### Western Blotting

**Image 1.** C17orf95 Antibody (C-term) (ABIN6244181 and ABIN6577333) western blot analysis in NCI- cell line lysates (35 µg/lane). This demonstrates the C17orf95 antibody detected the C17orf95 protein (arrow).