

Datasheet for ABIN6244182  
**anti-YPEL3 antibody (AA 69-101)**[Go to Product page](#)

## 1 Image

## Overview

Quantity:	50 µL
Target:	YPEL3
Binding Specificity:	AA 69-101
Reactivity:	Mouse, Rat
Host:	Rabbit
Clonality:	Polyclonal
Conjugate:	This YPEL3 antibody is un-conjugated
Application:	Western Blotting (WB)

## Product Details

Immunogen:	This YPEL3 antibody is generated from a rabbit immunized with a KLH conjugated synthetic peptide between 69-101 amino acids of mouse YPEL3.
Clone:	RB54518
Isotype:	IgG
Predicted Reactivity:	B, H
Purification:	This antibody is purified through a protein A column, followed by peptide affinity purification.

## Target Details

Target:	YPEL3
Alternative Name:	YPEL3 ( <a href="#">YPEL3 Products</a> )

## Target Details

Background:	Involved in proliferation and apoptosis in myeloid precursor cells.
Molecular Weight:	13608
UniProt:	<a href="#">P61237</a>

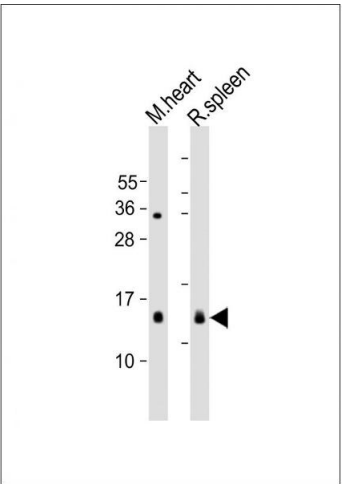
## Application Details

Application Notes:	WB: 1:2000
Restrictions:	For Research Use only

## Handling

Format:	Liquid
Buffer:	Purified polyclonal antibody supplied in PBS with 0.09 % (W/V) sodium azide.
Preservative:	Sodium azide
Precaution of Use:	This product contains Sodium azide: a POISONOUS AND HAZARDOUS SUBSTANCE which should be handled by trained staff only.
Storage:	4 °C,-20 °C
Expiry Date:	6 months

## Images



### Western Blotting

**Image 1.** All lanes : Anti-YPEL3 Antibody (C-Term) at 1:2000 dilution Lane 1: mouse heart lysate Lane 2: rat spleen lysate Lysates/proteins at 20 µg per lane. Secondary Goat Anti-Rabbit IgG, (H+L), Peroxidase conjugated at 1/10000 dilution. Predicted band size : 14 kDa Blocking/Dilution buffer: 5 % NFDM/TBST.