



[Go to Product page](#)

Datasheet for ABIN6244191

## anti-CCDC144A antibody (AA 1257-1289)

### 1 Image

#### Overview

Quantity:	200 µL
Target:	CCDC144A
Binding Specificity:	AA 1257-1289
Reactivity:	Human
Host:	Rabbit
Clonality:	Polyclonal
Conjugate:	This CCDC144A antibody is un-conjugated
Application:	Western Blotting (WB)

#### Product Details

Immunogen:	This CCDC144A antibody is generated from a rabbit immunized with a KLH conjugated synthetic peptide between 1257-1289 amino acids from human CCDC144A.
Clone:	RB56319
Isotype:	Ig Fraction
Purification:	This antibody is purified through a protein A column, followed by peptide affinity purification.

#### Target Details

Target:	CCDC144A
Alternative Name:	CCDC144A ( <a href="#">CCDC144A Products</a> )
Molecular Weight:	165125

## Target Details

UniProt: [A2RUR9](#)

## Application Details

Application Notes: WB: 1:2000

Restrictions: For Research Use only

## Handling

Format: Liquid

Buffer: Purified polyclonal antibody supplied in PBS with 0.09 % (W/V) sodium azide.

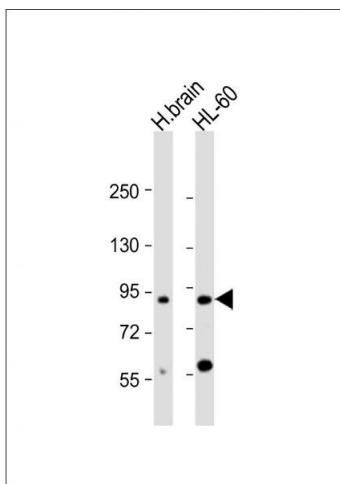
Preservative: Sodium azide

Precaution of Use: This product contains Sodium azide: a POISONOUS AND HAZARDOUS SUBSTANCE which should be handled by trained staff only.

Storage: 4 °C,-20 °C

Expiry Date: 6 months

## Images



### Western Blotting

**Image 1.** All lanes : Anti-CCDC144A Antibody (C-Term) at 1:2000 dilution Lane 1: human brain lysate Lane 2: HL-60 whole cell lysate Lysates/proteins at 20 µg per lane. Secondary Goat Anti-Rabbit IgG, (H+L), Peroxidase conjugated at 1/10000 dilution. Predicted band size : 165 kDa Blocking/Dilution buffer: 5 % NFDm/TBST.