



[Go to Product page](#)

Datasheet for ABIN6244197

anti-TMEM160 antibody (N-Term)

1 Image

Overview

Quantity:	400 µL
Target:	TMEM160
Binding Specificity:	AA 32-64, N-Term
Reactivity:	Human, Mouse
Host:	Rabbit
Clonality:	Polyclonal
Conjugate:	This TMEM160 antibody is un-conjugated
Application:	Western Blotting (WB)

Product Details

Immunogen:	This TMEM160 antibody is generated from a rabbit immunized with a KLH conjugated synthetic peptide between 32-64 amino acids from the N-terminal region of human TMEM160.
Clone:	RB49633
Isotype:	Ig Fraction
Predicted Reactivity:	B
Purification:	This antibody is purified through a protein A column, followed by peptide affinity purification.

Target Details

Target:	TMEM160
Alternative Name:	TMEM160 (TMEM160 Products)

Target Details

Molecular Weight: 19658

UniProt: [Q9NX00](#)

Application Details

Application Notes: WB: 1:1000

Restrictions: For Research Use only

Handling

Format: Liquid

Buffer: Purified polyclonal antibody supplied in PBS with 0.09 % (W/V) sodium azide.

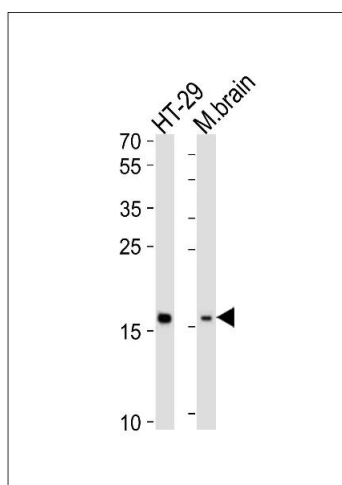
Preservative: Sodium azide

Precaution of Use: This product contains Sodium azide: a POISONOUS AND HAZARDOUS SUBSTANCE which should be handled by trained staff only.

Storage: 4 °C, -20 °C

Expiry Date: 6 months

Images



Western Blotting

Image 1. Western blot analysis of lysates from HT-29 cell line, mouse brain tissue lysate (from left to right), using TME Antibody (N-term) (ABIN6244197 and ABIN6577826). (ABIN6244197 and ABIN6577826) was diluted at 1:1000 at each lane. A goat anti-rabbit IgG H&L(HRP) at 1:10000 dilution was used as the secondary antibody. Lysates at 20 µg per lane.