



Datasheet for ABIN6244208
anti-NPAP1 antibody (AA 348-377)



[Go to Product page](#)

3 Images

1 Publication

Overview

Quantity:	400 µL
Target:	NPAP1
Binding Specificity:	AA 348-377
Reactivity:	Human
Host:	Rabbit
Clonality:	Polyclonal
Conjugate:	This NPAP1 antibody is un-conjugated
Application:	Immunohistochemistry (Paraffin-embedded Sections) (IHC (p)), Western Blotting (WB), Flow Cytometry (FACS)

Product Details

Immunogen:	This C15orf2 antibody is generated from rabbits immunized with a KLH conjugated synthetic peptide between 348-377 amino acids from the Central region of human C15orf2.
Clone:	RB23068
Isotype:	Ig Fraction
Purification:	This antibody is purified through a protein A column, followed by peptide affinity purification.

Target Details

Target:	NPAP1
Alternative Name:	C15orf2 (NPAP1 Products)

Target Details

Background: C15orf2 may be involved in spermatogenesis.

NCBI Accession: [NP_061831](#)

UniProt: [Q9NZP6](#)

Application Details

Application Notes: WB: 1:1000. IHC-P: 1:50~100. FC: 1:10~50

Restrictions: For Research Use only

Handling

Format: Liquid

Buffer: Purified polyclonal antibody supplied in PBS with 0.09 % (W/V) sodium azide.

Preservative: Sodium azide

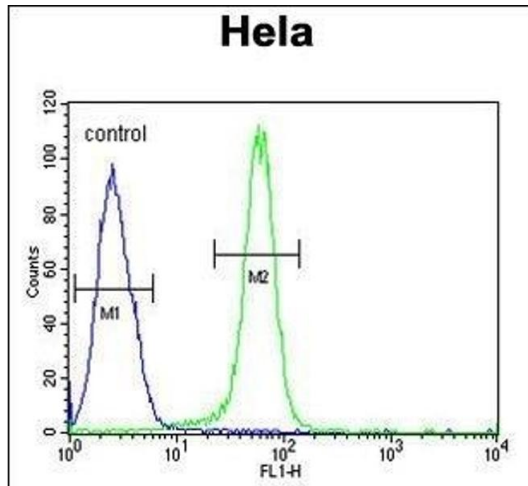
Precaution of Use: This product contains Sodium azide: a POISONOUS AND HAZARDOUS SUBSTANCE which should be handled by trained staff only.

Storage: 4 °C,-20 °C

Expiry Date: 6 months

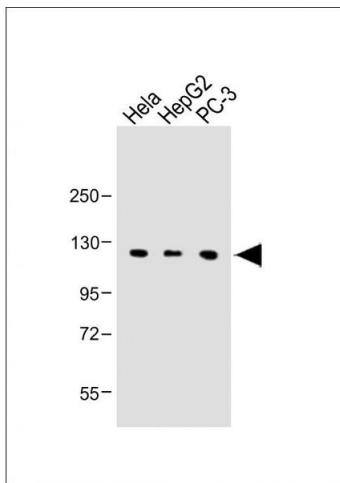
Publications

Product cited in: Neumann, Markaki, Mladenov, Hoffmann, Buiting, Horsthemke: "The imprinted NPAP1/C15orf2 gene in the Prader-Willi syndrome region encodes a nuclear pore complex associated protein." in: **Human molecular genetics**, Vol. 21, Issue 18, pp. 4038-48, (2013) ([PubMed](#)).



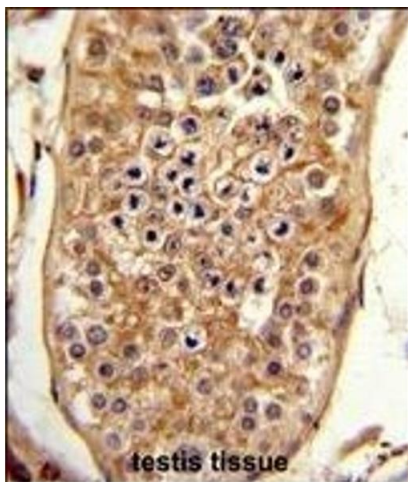
Flow Cytometry

Image 1. C15orf2 Antibody (Center) (ABIN6244208 and ABIN6579051) flow cytometric analysis of Hela cells (right histogram) compared to a negative control cell (left histogram). FITC-conjugated goat-anti-rabbit secondary antibodies were used for the analysis.



Western Blotting

Image 2. All lanes : Anti-C15orf2 Antibody (Center) at 1:1000 dilution Lane 1: Hela whole cell lysate Lane 2: HepG2 whole cell lysate Lane 3: PC-3 whole cell lysate Lysates/proteins at 20 µg per lane. Secondary Goat Anti-Rabbit IgG, (H+L), Peroxidase conjugated at 1/10000 dilution. Predicted band size : 121 kDa Blocking/Dilution buffer: 5 % NFDN/TBST.



Immunohistochemistry (Paraffin-embedded Sections)

Image 3. Formalin-fixed and paraffin-embedded human testis tissue reacted with C15orf2 Antibody (Center), which was peroxidase-conjugated to the secondary antibody, followed by DAB staining. This data demonstrates the use of this antibody for immunohistochemistry, clinical relevance has not been evaluated.