

Datasheet for ABIN6244225
anti-TIMM10 antibody (AA 21-49)



[Go to Product page](#)

1 Image

Overview

Quantity:	400 µL
Target:	TIMM10
Binding Specificity:	AA 21-49
Reactivity:	Human
Host:	Rabbit
Clonality:	Polyclonal
Conjugate:	This TIMM10 antibody is un-conjugated
Application:	Western Blotting (WB)

Product Details

Immunogen:	This TIMM10 antibody is generated from rabbits immunized with a KLH conjugated synthetic peptide between 21-49 amino acids from the Central region of human TIMM10.
Clone:	RB39465
Isotype:	Ig Fraction
Predicted Reactivity:	X, B, M, Rat
Purification:	This antibody is purified through a protein A column, followed by peptide affinity purification.

Target Details

Target:	TIMM10
Alternative Name:	TIMM10 (TIMM10 Products)

Target Details

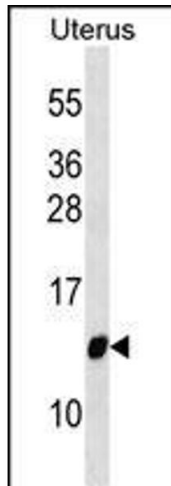
Background:	TIMM10 belongs to a family of evolutionarily conserved proteins that are organized in heterooligomeric complexes in the mitochondrial intermembrane space. These proteins mediate the import and insertion of hydrophobic membrane proteins into the mitochondrial inner membrane.
Molecular Weight:	10333
NCBI Accession:	NP_036588
UniProt:	P62072
Pathways:	Sensory Perception of Sound , SARS-CoV-2 Protein Interactome

Application Details

Application Notes:	WB: 1:1000
Restrictions:	For Research Use only

Handling

Format:	Liquid
Buffer:	Purified polyclonal antibody supplied in PBS with 0.09 % (W/V) sodium azide.
Preservative:	Sodium azide
Precaution of Use:	This product contains Sodium azide: a POISONOUS AND HAZARDOUS SUBSTANCE which should be handled by trained staff only.
Storage:	4 °C,-20 °C
Expiry Date:	6 months



Western Blotting

Image 1. TI Antibody (Center) (ABIN6244225 and ABIN6577376) western blot analysis in Uterus tissue lysates (35 µg/lane). This demonstrates the TI antibody detected the TI protein (arrow).